



Because light matters.



Condensed Product Catalog Electronic HID Products



www.renova.com • 1-800-635-6682

RENOVA's primary focus is to provide its customers with the highest quality of innovative, energy efficient lighting products and solutions at competitive prices, with the shortest possible lead-time. RENOVA is committed to delivering optimum lighting solutions with the best customer service in the industry.

RENOVA's products have been developed to maximize light output through the use of precisely engineered optical designs. The photometric properties are then evaluated using industry-leading software programs, which allow engineers to maximize total luminaire efficiency and adjust the light distribution, providing the most effective fixture spacing to mounting height ratio. All of RENOVA's lighting products receive the highest attention to detail to insure performance, quality and value.

RENOVA employs a staff of qualified engineers that continuously develop and improve luminaire design. This guarantees that customers get exactly what they need, when they need it. Customer service is integrated with the entire process so customers can always access information regarding their order.

RENOVA is dedicated to providing its customers with lighting products that are free from defects. RENOVA has adopted a "zero" defect policy. This assures our customers that we stand behind everything we produce.

Thank you for considering RENOVA for your energy efficient lighting products and solutions.



RICK EDWARDS
PRESIDENT/CEO

401.682.1850 x2001
800.635.6682
f: 401.682.1860
redwards@renova.com

20 Middlesex Road
Mansfield, MA 02048

Innovative Lighting Ideas. Energy Efficient Solutions.



DAVE NADEAU
VICE PRESIDENT/CFO

401.682.1850 x2002
800.635.6682
f: 401.682.1860
dnadeau@renova.com

20 Middlesex Road
Mansfield, MA 02048

Innovative Lighting Ideas. Energy Efficient Solutions.



RUDY MUTTER
GENERAL MANAGER

401.682.1850 x2007
800.635.6682
f: 401.682.1860
rmutter@renova.com

20 Middlesex Road
Mansfield, MA 02048

Innovative Lighting Ideas. Energy Efficient Solutions.



STEWART B. HAMEL
Director of Sales/
New Business Development

p: 508.452.1240 x2004
c: 781.915.4117
f: 508.452.1245
800.635.6682

shamel@renova.com
www.renova.com

20 Middlesex Road
Mansfield, MA 02048

Innovative Lighting Ideas. Energy Efficient Solutions.





*Innovative Lighting Ideas.
Energy Efficient Solutions.*

Electronic HID Lighting

One of the most energy-saving innovations in the lighting industry has been the development of electronic HID ballasts. The precise control of light output afforded by electronic HID ballasts allows energy costs to be reduced by up to 65% while allowing lower installation and maintenance costs. The ballast allows lumen output to be maintained above 90% over the lamp life, and provides flicker-free consistent color temperature and uniformity between lamps for exceptional light quality.

Electronic HID ballasts can be connected to a number of standard control devices such as analog dimmers, sensors, and timers, a cost-effective and automated benefit that delivers additional savings. Digital dimming is achieved through control software or by integrating with existing monitoring and control systems.

Electronic-ballasted HID fixtures are perfect for both indoor and outdoor environments and may even qualify for rebates from local utility companies.

The basic benefits include:

- Digitally controlled ignition and microprocessor control allows for longer lamp life and higher reliability.
- Better lumen and color consistency with no flickering or “wall blackening”.
- Greatly improves lumen maintenance - above 90% over the life of the lamp, and allows the use of lower wattage lamps to achieve similar maintained lumens to conventional HID.
- Uses less energy than magnetic ballasts and allows energy costs to be reduced by up to 65%.
- Auto-profile, 0-10V analog, and advanced digital dimming are available at no additional cost.
- Universal input voltage for use in many applications.
- High efficiency pulse start lamps are readily available.



Small Accord Wall Pack - Semi Cutoff

RLS-WPA15

PSMH:
50w, 70w, 100w

CosmoPolis:
45w, 60w



Large Accord Wall Pack - Semi Cutoff

RLS-WPA25

PSMH:
100w, 150w, 175w, 250w

HPS:
100w, 150w, 250w

CosmoPolis:
90w, 140w



Medium Constellation Wall Pack - Full Cutoff

RLS-WPC15

PSMH:
50w, 70w, 100w

CosmoPolis:
45w, 60w



Large Constellation Wall Pack - Full Cutoff

RLS-WPC25

PSMH:
150w, 175w, 200w, 250w

HPS:
100w, 150w, 250w

CosmoPolis:
90w, 140w



Large Deep Wall Pack

RLS-WP25

PSMH:
150w, 175w, 200w, 250w

HPS:
100w, 150w, 250w

CosmoPolis:
90w, 140w



Medium Wall Pack

RLS-WP15

PSMH:
50w, 70w, 100w

CosmoPolis:
45w, 60w



Wallite Down Light

RLS-WCS

PSMH:
50w, 70w, 100w

CosmoPolis:
45w, 60w, 90w,



Wallite Up/Down Light

RLS-WCD

PSMH:
50w, 70w, 100w, 150w, 175w

CosmoPolis:
45w, 60w, 90w, 140w

ELECTRONIC HID | WALL PACKS

To Order Call: 800-635-6682



*Innovative Lighting Ideas.
Energy Efficient Solutions.*

- Renova Lighting Systems can provide custom wiring and painting along with quick shipments to any part of the US.
- Nickel-plated stainless steel screws, clips and fasteners for rust resistance and durability.
- Our products are manufactured from top quality materials to provide years of trouble-free service, including pure imported A360 aluminum ingot for superior thermal properties and durability.
- Silicone gaskets seal out dirt and moisture while providing superior fire-resistance.
- Molded Borosilicate glass lenses are manufactured for superior thermal shock resistance and clarity.
- Polycarbonate lenses are manufactured from Lexan 243R or Bayer 2407 material, which offer the highest UV and temperature ratings available.
- Pure aluminum reflectors (99.4%) for better photometry and lumen output, and thicker for better shape retention and durability.
- DuPont powder is used for our powdercoat finishes for superior UV resistance and durability.
- A chromate conversion coating is applied prior to the powdercoat painting to increase the corrosion resistance of the housings and provide an excellent bonding surface for the paint, which prolongs the life of the fixture.



Acclaim Open Face Frame Wall Pack

RLS-WPR40OF

PSMH:
50w, 70w, 100w
150w

CosmoPolis:
45w, 60w



Acclaim Grid Frame Wall Pack

RLS-WPR40GR

PSMH:
50w, 70w, 100w
150w

CosmoPolis:
45w, 60w



Acclaim Half Cutoff Wall Pack

RLS-WPR40HC

PSMH:
50w, 70w, 100w
150w

CosmoPolis:
45w, 60w

ELECTRONIC HID | WALL PACKS



Industrial Mini Cutoff Bulkhead

RLS-WP18C

PSMH:
50w



Slimline Wall Pack

RLS-WPS40

PSMH:
100w, 150w, 175w,
200w, 250w

HPS:
100w, 150w, 250w



**Crescent Wall
Sconce Down Light**

RLS-WP35

PSMH:
50w, 70w, 100w



**Crescent Wall
Sconce Up/Down Light**

RLS-WP36

PSMH:
50w, 70w, 100w



Orion Wall Pack

RLS-WPC36

PSMH:
50w, 70w, 100w

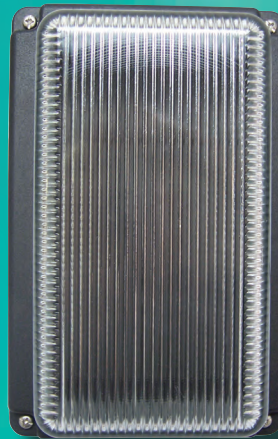


Mini Wall Pack

RLS-WP13

PSMH:
50w

CosmoPolis:
45w



Industrial Mini Open Bulkhead

RLS-WP180

PSMH:
50w



Crescent II Up/Down Wall Pack

RLS-WP34

PSMH:
50w

CosmoPolis:
45w

ELECTRONIC HID | WALL PACKS

To Order Call: 800-635-6682



*Innovative Lighting Ideas.
Energy Efficient Solutions.*

- Renova Lighting Systems can provide custom wiring and painting along with quick shipments to any part of the US.
- Nickel-plated stainless steel screws, clips and fasteners for rust resistance and durability.
- Our products are manufactured from top quality materials to provide years of trouble-free service, including pure imported A360 aluminum ingot for superior thermal properties and durability.
- Silicone gaskets seal out dirt and moisture while providing superior fire-resistance.
- Molded Borosilicate glass lenses are manufactured for superior thermal shock resistance and clarity.
- Polycarbonate lenses are manufactured from Lexan 243R or Bayer 2407 material, which offer the highest UV and temperature ratings available.
- Pure aluminum reflectors (99.4%) for better photometry and lumen output, and thicker for better shape retention and durability.
- DuPont powder is used for our powdercoat finishes for superior UV resistance and durability.
- A chromate conversion coating is applied prior to the powdercoat painting to increase the corrosion resistance of the housings and provide an excellent bonding surface for the paint, which prolongs the life of the fixture.



Thermalux Garage Lighter

RLS-TGL40

PSMH:
50w, 70w, 100w
150w, 175w, 200w

LOW THERMAL DESIGN



Gas Station Canopy

RLS-CP80

PSMH:
100w, 150w, 175w,
200w, 250w, 320w



Deluxe Garage Lighter

RLS-VNGL30

PSMH:
50w, 70w, 100w

CosmoPolis:
45w

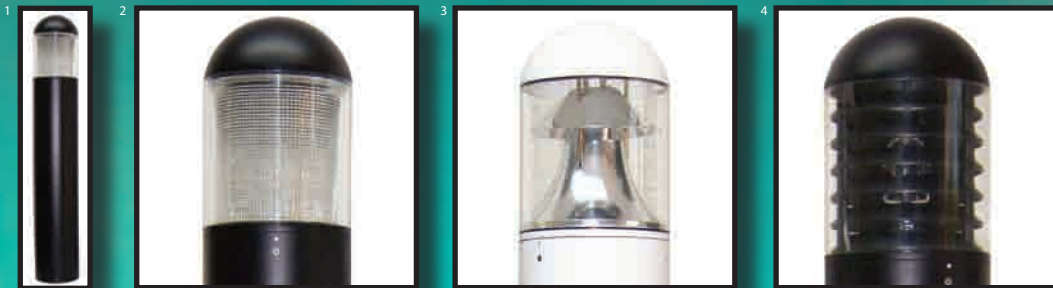


Sportlighter

RLS-SP50

PSMH:
250w, 320w, 350w,
400w

ELECTRONIC HID | GARAGE & SPORT LIGHTING



Dome Bollard
 Type III Glass
 Type V Glass
 Reflector
 Louvers

1	2	3	4
RLS-BOG3	RLS-BOG5	RLS-BOR	RLS-BOL
PSMH: 50w, 70w, 100w CosmoPolis: 45w, 60w, 90w	PSMH: 50w, 70w, 100w CosmoPolis: 45w, 60w, 90w	PSMH: 50w, 70w, 100w CosmoPolis: 45w, 60w, 90w	PSMH: 50w, 70w, 100w CosmoPolis: 45w, 60w, 90w



Flat Top Bollard
 Type III Glass
 Type V Glass
 Reflector
 Louvers

1	2	3	4
RLS-BOFG3	RLS-BOFG5	RLS-BOFR	RLS-BOFL
PSMH: 50w, 70w, 100w CosmoPolis: 45w, 60w, 90w	PSMH: 50w, 70w, 100w CosmoPolis: 45w, 60w, 90w	PSMH: 50w, 70w, 100w CosmoPolis: 45w, 60w, 90w	PSMH: 50w, 70w, 100w CosmoPolis: 45w, 60w, 90w



Square Bollard
 Type III Glass
 Type V Glass
 Reflector
 Round Louvers
 Square Louvers

1	2	3	4	5
RLS-BOSFG3	RLS-BOSFG5	RLS-BOSFR	RLS-BOSFLR	RLS-BOSFLS
PSMH: 50w, 70w, 100w CosmoPolis: 45w, 60w, 90w	PSMH: 50w, 70w, 100w CosmoPolis: 45w, 60w, 90w	PSMH: 50w, 70w, 100w CosmoPolis: 45w, 60w, 90w	PSMH: 50w, 70w, 100w CosmoPolis: 45w, 60w, 90w	PSMH: 50w, 70w, 100w CosmoPolis: 45w, 60w, 90w

ELECTRONIC HID | BOLLARDS

To Order Call: 800-635-6682



*Innovative Lighting Ideas.
Energy Efficient Solutions.*

- Renova Lighting Systems can provide custom wiring and painting along with quick shipments to any part of the US.
- Nickel-plated stainless steel screws, clips and fasteners for rust resistance and durability.
- Our products are manufactured from top quality materials to provide years of trouble-free service, including pure imported A360 aluminum ingot for superior thermal properties and durability.
- Silicone gaskets seal out dirt and moisture while providing superior fire-resistance.
- Molded Borosilicate glass lenses are manufactured for superior thermal shock resistance and clarity.
- Polycarbonate lenses are manufactured from Lexan 243R or Bayer 2407 material, which offer the highest UV and temperature ratings available.
- Pure aluminum reflectors (99.4%) for better photometry and lumen output, and thicker for better shape retention and durability.
- DuPont powder is used for our powdercoat finishes for superior UV resistance and durability.
- A chromate conversion coating is applied prior to the powdercoat painting to increase the corrosion resistance of the housings and provide an excellent bonding surface for the paint, which prolongs the life of the fixture.



Cobrahead

RLS-CH40

PSMH:
50w, 70w, 100w,
150w

CosmoPolis:
45w, 60w, 90w, 140w



Deluxe Cobrahead

RLS-CH50

PSMH:
175w, 200w, 250w



Large Colonnade Pole Top Fitter

RLS-PF50

PSMH:
50w, 70w, 100w,
150w

CosmoPolis:
45w, 60w, 90w, 140w

Large Flood Light

RLS-FL65

PSMH:
50w, 70w, 100w,
150w,



Medium Flood Light

RLS-FL45

PSMH:
50w, 70w

ELECTRONIC HID | FLOOD & AREA LIGHTING



Small Adjusta Area Light - Forward Throw Reflector

RLS-AD20F

PSMH:
50w, 70w, 100w,
150w



Small Adjusta Area Light - Type V Reflector

RLS-AD20S

PSMH:
50w, 70w, 100w,
150w



Small Adjusta Area Light - Flood Reflector

RLS-AD20L

PSMH:
50w, 70w, 100w,
150w



Large Adjusta Area Light - Forward Throw Reflector

RLS-AD40F

PSMH:
175w, 200w, 250w,
320w, 350w, 400w

HPS:
100w, 150w, 250w



Large Adjusta Area Light - Type V Reflector

RLS-AD40S

PSMH:
175w, 200w, 250w,
320w, 350w, 400w

HPS:
100w, 150w, 250w



Large Adjusta Area Light - Cutoff Reflector

RLS-AD40C

PSMH:
175w, 200w, 250w,
320w, 350w, 400w

HPS:
100w, 150w, 250w



Large Adjusta Area Light - Wide Angle Reflector

RLS-AD40W

PSMH:
175w, 200w, 250w,
320w, 350w, 400w

HPS:
100w, 150w, 250w



16" Flood Light

RLS-FL70

PSMH:
100w, 150w, 175w,
200w, 250w

HPS:
100w, 150w, 250w



23" Flood Light

RLS-FL90

PSMH:
320w, 350w, 400w

HPS:
400w

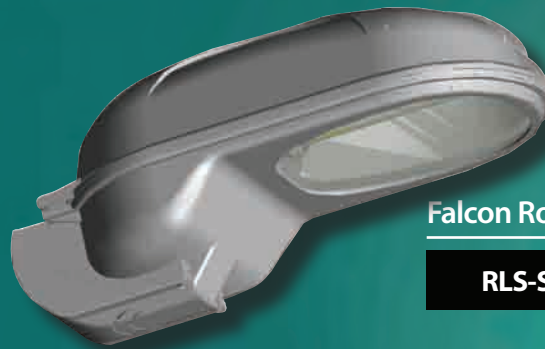
ELECTRONIC HID | FLOOD & AREA LIGHTING

To Order Call: 800-635-6682



*Innovative Lighting Ideas.
Energy Efficient Solutions.*

- Renova Lighting Systems can provide custom wiring and painting along with quick shipments to any part of the US.
- Nickel-plated stainless steel screws, clips and fasteners for rust resistance and durability.
- Our products are manufactured from top quality materials to provide years of trouble-free service, including pure imported A360 aluminum ingot for superior thermal properties and durability.
- Silicone gaskets seal out dirt and moisture while providing superior fire-resistance.
- Molded Borosilicate glass lenses are manufactured for superior thermal shock resistance and clarity.
- Polycarbonate lenses are manufactured from Lexan 243R or Bayer 2407 material, which offer the highest UV and temperature ratings available.
- Pure aluminum reflectors (99.4%) for better photometry and lumen output, and thicker for better shape retention and durability.
- DuPont powder is used for our powdercoat finishes for superior UV resistance and durability.
- A chromate conversion coating is applied prior to the powdercoat painting to increase the corrosion resistance of the housings and provide an excellent bonding surface for the paint, which prolongs the life of the fixture.



Falcon Roadway Light

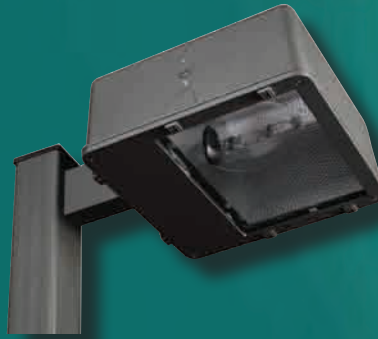
RLS-STL

PSMH:
50w, 70w, 100w,
150w, 175w, 200w,
250w, 320w, 350w,
400w

HPS:
100w, 150w, 250w,
400w

CosmoPolis:
45w, 60w, 90w, 140w

***CONTAINER ORDER ONLY**



16" Square Shoebox - Wide Angle Reflector

RLS-FL70W

PSMH:
100w, 150w, 175w,
200w, 250w

HPS:
100w, 150w, 250w



16" Square Shoebox - Type V Reflector

RLS-FL70S

PSMH:
100w, 150w, 175w,
200w, 250w

HPS:
100w, 150w, 250w



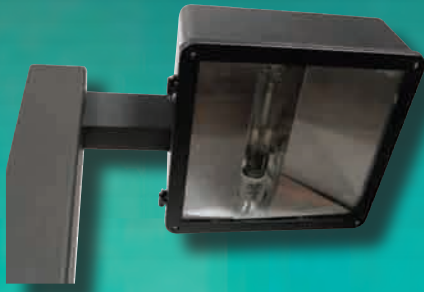
16" Square Shoebox - Forward Throw Reflector

RLS-FL70F

PSMH:
100w, 150w, 175w,
200w, 250w

HPS:
100w, 150w, 250w

ELECTRONIC HID | AREA LIGHTING



16" Square Shoebox - Cutoff Reflector

RLS-AL70C

PSMH:
100w, 150w, 175w,
200w, 250w

HPS:
100w, 150w, 250w



23" Square Shoebox - Wide Angle Reflector

RLS-FL90W

PSMH:
320w, 350w, 400w

HPS:
400w



23" Square Shoebox - Cutoff Reflector

RLS-AL90C

PSMH:
320w, 350w, 400w

HPS:
400w



23" Square Shoebox - Type V Reflector

RLS-FL905

PSMH:
320w, 350w, 400w

HPS:
400w



23" Square Shoebox - Forward Throw Reflector

RLS-FL90F

PSMH:
320w, 350w, 400w

HPS:
400w



Medium 5th Avenue - Narrow Forward Throw Reflector

RLS-FA20F

PSMH:
50w, 70w, 100w,
150w, 175w, 200w,
250w



Medium 5th Avenue - Type 3 Reflector

RLS-FA203

PSMH:
50w, 70w, 100w,
150w, 175w, 200w,
250w



Medium 5th Avenue - Narrow Type 3 Reflector

RLS-FA20N3

PSMH:
50w, 70w, 100w,
150w, 175w, 200w,
250w



Large 5th Avenue - Forward Throw Reflector

RLS-FA30F

PSMH:
320w, 350w, 400w



ELECTRONIC HID | AREA LIGHTING

To Order Call: 800-635-6682



*Innovative Lighting Ideas.
Energy Efficient Solutions.*

- Renova Lighting Systems can provide custom wiring and painting along with quick shipments to any part of the US.
- Nickel-plated stainless steel screws, clips and fasteners for rust resistance and durability.
- Our products are manufactured from top quality materials to provide years of trouble-free service, including pure imported A360 aluminum ingot for superior thermal properties and durability.
- Silicone gaskets seal out dirt and moisture while providing superior fire-resistance.
- Molded Borosilicate glass lenses are manufactured for superior thermal shock resistance and clarity.
- Polycarbonate lenses are manufactured from Lexan 243R or Bayer 2407 material, which offer the highest UV and temperature ratings available.
- Pure aluminum reflectors (99.4%) for better photometry and lumen output, and thicker for better shape retention and durability.
- DuPont powder is used for our powdercoat finishes for superior UV resistance and durability.
- A chromate conversion coating is applied prior to the powdercoat painting to increase the corrosion resistance of the housings and provide an excellent bonding surface for the paint, which prolongs the life of the fixture.



**Large 5th Avenue -
4 Square**



RLS-FA30S4

PSMH:
320w, 350w, 400w



**Large 5th Avenue -
Wide Type 2 Reflector**



RLS-FA302

PSMH:
320w, 350w, 400w



**Medium Broadway -
Type 5 Reflector**



RLS-BW205

PSMH:
50w, 70w, 100w,
150w, 175w, 200w,
250w



**Medium Broadway -
Type 3 Reflector**



RLS-BW203

PSMH:
50w, 70w, 100w,
150w, 175w, 200w,
250w

ELECTRONIC HID | AREA LIGHTING



Medium Broadway - Narrow Forward Throw Reflector

RLS-BW20F

PSMH:
50w, 70w, 100w,
150w, 175w, 200w,
250w



Large Broadway - Type 5 Reflector

RLS-BW305

PSMH:
250w, 320w, 350w,
400w, 450w



Large Broadway - Type 3 Reflector

RLS-BW303

PSMH:
250w, 320w, 350w,
400w



Large Broadway - Forward Throw Reflector

RLS-BW30F

PSMH:
250w, 320w, 350w,
400w, 450w



Large Madison - Type 5 Reflector

RLS-MD305

PSMH:
250w, 320w, 350w,
400w, 450w



Large Madison - Type 3 Reflector

RLS-MD303

PSMH:
250w, 320w, 350w,
400w, 450w



Large Madison - Narrow Forward Throw Reflector

RLS-MD30F

PSMH:
250w, 320w, 350w,
400w, 450w



Medium Kitty Hawk USA - Adjustable Reflector

RLS-KHU20A

PSMH:
100w, 150w, 175w,
200w, 250w



Large Kitty Hawk USA - Wide Type II Reflector

RLS-KHU302

PSMH:
320w, 350w, 400w



ELECTRONIC HID | AREA LIGHTING

To Order Call: 800-635-6682



*Innovative Lighting Ideas.
Energy Efficient Solutions.*

- Renova Lighting Systems can provide custom wiring and painting along with quick shipments to any part of the US.
- Nickel-plated stainless steel screws, clips and fasteners for rust resistance and durability.
- Our products are manufactured from top quality materials to provide years of trouble-free service, including pure imported A360 aluminum ingot for superior thermal properties and durability.
- Silicone gaskets seal out dirt and moisture while providing superior fire-resistance.
- Molded Borosilicate glass lenses are manufactured for superior thermal shock resistance and clarity.
- Polycarbonate lenses are manufactured from Lexan 243R or Bayer 2407 material, which offer the highest UV and temperature ratings available.
- Pure aluminum reflectors (99.4%) for better photometry and lumen output, and thicker for better shape retention and durability.
- DuPont powder is used for our powdercoat finishes for superior UV resistance and durability.
- A chromate conversion coating is applied prior to the powdercoat painting to increase the corrosion resistance of the housings and provide an excellent bonding surface for the paint, which prolongs the life of the fixture.

Thermalux High Bay

RLS-HB410

PSMH:
100w, 150w, 175w,
200w, 250w, 320w,
350w, 400w, 450w

LOW THERMAL DESIGN



Thermalux High Bay Step Transformer

RLS-HB41

PSMH:
175w, 200w, 250w,
320w, 350w, 400w,
450w



Thermalux Low Bay

RLS-LB400

PSMH:
100w, 150w, 175w,
200w, 250w, 320w,
350w, 400w, 450w

LOW THERMAL DESIGN



Nova High/Low Bay

RLS-EH20

PSMH:
50w, 70w, 100w,
150w, 175w, 200w,
250w, 320w, 350w,
400w, 450w

*CONTAINER ORDER ONLY

Nova High Bay

RLS-EH21

PSMH:
175w, 200w, 250w,
320w, 350w, 400w,
450w

*CONTAINER ORDER ONLY



ELECTRONIC HID | HIGH BAY



Wall Motion Sensor

P17100

- Use for controlling bathroom ventilation fans, residential & commercial applications, security lighting.
- Fits standard wall box.
- Switch Function: On/Off/Auto.



Swivel Control

RLS-P18120

RLS-P18122

- Control passage & doorway lighting, rain tight for outdoor use.
- Convenient directional control, 0-200° swivel.



Ceiling Motion Sensor

RLS-P17110

RLS-P17112

- Use for controlling bathroom ventilation fans, residential & commercial applications, security lighting.



Twist Lock Receptacle

RLS-P18130

- Phenolic socket for twist lock photocells.
- Includes ABS waterproof cover.



High Bay Occupancy Sensor

RLS-P18100

RLS-P18102

- Control indoor high bay spaces.
- Aisle-lighter and 360° coverage options.



Instant Twist Lock Photo Control

RLS-P18140

RLS-P18142

- IP65 Protection.
- Built-in surge arrester.



Button Control

RLS-P18100

RLS-P18102

- Control passage & doorway lighting, rain tight for outdoor use.



Time Delay Twist Lock Photo Control

RLS-P18150

RLS-P18152

- IP65 Protection.
- 30-120 second time-delay switch-over for luminaire protection.



Pencil Control

RLS-P18110

RLS-P18112

- Control passage & doorway lighting, rain tight for outdoor use.
- Convenient directional control, 0-200° swivel.

OCCUPANCY SENSORS & PHOTOCELLS

To Order Call: 800-635-6682

LIMITED WARRANTY

LAMP/LED, BALLAST/DRIVER & FIXTURES

RENOVA Lighting Systems (RENOVA) warrants the following products manufactured in accordance to our specifications against defective material or workmanship, but not against damage caused by accident, abuse, faulty installation, acts of nature, alteration of product, improper operation or improper installation. Warranty period will be determined from the date of purchase or as specifically listed below:

Fixtures for HID, LED & Induction:

Fixture, including housing and glass or polycarbonate lenses but excluding ballast and lamp: For a period of three (3) years from date of purchase.

HID:

Lamp: As warranted by lamp manufacturer.

Ballast: As warranted by ballast manufacturer.

LED[†]:

Xicato Module: For a period of five (5) years from date of manufacture as indicated by the date code stamped on each product, as warranted by manufacturer.

LG Module/Array: For a period of five (5) years from date of manufacture as indicated by the date code stamped on each product, as warranted by manufacturer.

Driver: For a period of five (5) years from date of manufacture as indicated by the date code stamped on each product, as warranted by manufacturer.

INDUCTION[†]:

LVD Lamp & Ballast: For a period of five (5) years from date of manufacture, as warranted by manufacturer.

RENOVA's obligation under this warranty is limited to applying a credit, repair of the defective component or fixture, or replacement of the defective component or fixture, in the company's sole discretion, where of any part of its product is found to be defective in materials or workmanship under normal use and service. This warranty excludes field service or labor charges related to the repair or replacement of any products sold by RENOVA.

RENOVA is not responsible for any other equipment or components which is attached or used in conjunction with the fixture and all such equipment or components is excluded from this warranty.

Any and all warranty claims must be identified in writing to RENOVA for request to return products and returns and associated costs are to be the responsibility of the purchaser.

No implied statutory warranty of merchantability or fitness for a particular purpose shall apply beyond the aforementioned warranty period. This warranty is exclusive of all other statutory, written or oral warranties and no other warranties of any kind, statutory or otherwise, are given or herein expressed.

Under no circumstances, whether a result of breach of contract, breach of warranty, tort, strict liability or otherwise, will RENOVA be liable for consequential, incidental, special or exemplary damages, including, but not limited to, loss of profits, loss of use or damage to any property or equipment, cost of capital, cost of substitute products, facilities or services, downtime costs or claims of any kind or any loss or damage arising out of, resulting from, or concerning any aspect of this agreement or from the products or services provided.

Note: [†] Warranties shown for components from specific manufacturers. Please consult factory for all available manufacturers components and related warranties.

Terms & Conditions

DEFINITIONS: The definitions listed below apply whenever we use these words in the Agreement: "We", "Us" and "Our" mean RENOVA Lighting Systems, Inc. "You" and "Your" mean the person(s) or entity that signs the Account Application or on whose behalf the Account Application is signed. "Account" means the Business Credit Account with us established by this Agreement and which shall be used only for the purchase of merchandise and/or services from RENOVA for your business use.

ACCOUNT: You have chosen to apply for this Business Credit Account for your business use and to purchase merchandise on open account under the terms of this Agreement. In consideration of the granting of Account privileges by us, you promise to pay us a credit price for any purchases made on this account, plus any other fees or charges under this Agreement. You hereby agree that this Account shall be used only for the purchase of merchandise and/or services from RENOVA for your business use. You agree that the only persons who may use the Account are those who are listed as Authorized Purchasers listed in the Commercial/Business Application. You agree to be liable to the extent permitted by the applicable law for any losses we suffer due to your failure to notify us of any changes to the Authorized Purchasers list. This agreement is not binding upon us until credit is approved by us.

CREDIT LINE: You agree that we may establish a Credit Line (limit) for your convenience and that you agree that we may change your Credit Line from time to time, based on our evaluation of changes in your credit capacity and your performance under this Account.

BILLING TERMS: You agree that if an Account is opened pursuant to this Agreement, the Account and all credit extended hereunder shall be governed by this Agreement. By accepting the terms herein, you agree to accept our descriptive billing system accounting for all purchases on the Account. The RENOVA Invoice number will be the reference number used for billing purposes to identify purchases of merchandise and/or services. Purchase Order numbers will be accepted by RENOVA when available, and printed on your Invoice for your information only. It is your responsibility to provide a Purchase Order number if your company requires a Purchase Order number for purchases. The presence of or lack of a Purchase Order number on the Invoice or Billing Statement in no way affects your responsibility to pay amounts due on this Account. Upon establishment of an Account, you agree to pay, at such place as we designate, in accordance with the billings, the then current payment schedule amounts for the use of this Account, and all applicable charges which may then be in effect.

PAYMENTS TERMS: Until we shall give written notice to you of a change therein, our terms are that all invoices are due in full on the thirtieth (30th) day following Invoice date. We may not agree to defer payment or collection beyond

this date and may take action to enforce our rights, including cancellation or suspension of your Account privileges regardless of any late charge or partial payments that may be made.

LATE CHARGE: There is a late charge of one and one half percent (1-1/2%) that may be assessed at the end of each month (18% per annum), or the maximum rate permitted by law, whichever is less, on all open invoice amounts that are past due or more than thirty (30) days old. Product will not be shipped to past due accounts.

APPLICATION OF PAYMENT: Remittances are required to reference Invoice numbers being paid and payments will be applied against matching open items. When we are unable to match payments with open items, these amounts will be applied to open items in order of age or held as a general credit against open or future invoices.

SECURITY: You are giving us and we are retaining a purchase money security interest in the merchandise purchased under this Agreement until the debt for that merchandise is paid in full. This permits us, under certain circumstances, as provided by law, to take back or repossess the merchandise if you do not pay for it under the terms of this Agreement.

DEFAULT: If you should become insolvent, if you do not meet your payment obligations when they become due, if a receiver, custodian or trustee is appointed for you or any of your property, if there is a filing of a voluntary or involuntary petition for relief or bankruptcy, reorganization, or arrangement, if an assignment is made for the benefit of your creditors, if there is a meeting called of your creditors or if you should breach any other terms of this Agreement, we may demand the entire unpaid balance to be paid immediately and, as provided by law, commence any legal action for collection of the balance due. We may also pursue any other legal action deemed necessary or appropriate with respect to the Account. You agree to pay reasonable collection fees, attorney's fees and court costs. We also reserve all rights and remedies pertaining to repossession and resale of any repossessed merchandise as provided by law.

CHANGES IN TERMS: You agree that we may change the existing rates, charges and other terms of the Agreement, as well as introduce new terms (such as non-sufficient check charges), as may be authorized by law. Any such amendments will apply to the then existing balance of your Account to the extent permitted by law. No one else has the authority to change this Agreement.

CREDIT CAPACITY: You give us the right to investigate your business and/or personal credit capacity and credit history. We are authorized to furnish information about the Account and you to credit reporting agencies and others who may lawfully receive this information.

WAIVER: No waiver of any provision of or default under this Agreement shall affect the right of RENOVA thereof to enforce any other provision or to exercise any right or remedy in the event of any other default, whether or not similar.

CANCELLATION: We and you have the right to cancel this Agreement/Account at any time and for any reason as it relates to future purchases. You remain obligated to pay for any balance existing prior to cancellation.

ASSIGNMENT: We reserve the right to assign all or part of the terms and/or conditions of this Agreement at any time, without prior notice to you.

CONDITIONS OF SALE: You agree that any purchase under this Agreement will be subjected to the terms set forth in this Agreement, our Invoices or order forms, and that the terms set out in any different form shall not apply, even though the form may be submitted to or accepted by RENOVA as evidence of the order.

SALES INVOICES: Sales invoices will not be mailed with or accompany the monthly billing statement. Therefore, you must retain your original Sales Invoice for your records.

FREIGHT POLICY: All freight charges are prepaid and added. Please consult the RENOVA web site for current freight policy.

DAMAGE POLICY: Experienced packers using standard, approved packaging methods pack all shipments with great care. As all shipments are FOB Plant, transfer of ownership occurs when the carrier picks up product. Therefore, if any damage occurs in transit, a claim must be filed with the carrier for your loss or damage. The carrier is responsible for breakage in transit. RENOVA will assist you in every possible manner in collecting your claims for loss or damage.

RETURN POLICY: Product may be returned only with prior written approval from RENOVA's Customer Service Department. Product must be in unused condition, in original packaging and must be marked with the Return Goods Authorization (RGA) Number. Product returned will be subject to a 35% restocking charge with all freight charges being the buyer's responsibility. Custom Designed products and Special Order Items are not returnable without special consideration from RENOVA.

MINIMUM ORDER: \$250 minimum order fee for samples, custom or special products is rebated upon receipt of a project's large order.

ENTIRE AGREEMENT: This is our entire agreement. No changes can be made except in writing signed by an authorized representative of RENOVA.



Doing business with RENOVA means saving energy, saving money, and getting the job done right.



**Condensed
Product Catalog
Fluorescent
Fixtures
& Retrofit Kits**

#RLS-SBFF-111



**Condensed
Product Catalog
LED, Induction
& EHID Products**

#RLS-SBLP-312



**Condensed
Product Catalog
Miscellaneous
Components**

#RLS-SBMC-111



Hg

Fluorescent lamps contain small amounts of mercury. Such lamps are labeled "Contains Mercury" and/or with the symbol "Hg." Lamps that contain mercury must be disposed of in accordance with local requirements. Information regarding lamp recycling and disposal can be found at www.lamprecycle.org.



**Innovative Lighting Ideas
Energy Efficient Solutions**

**RENOVA Lighting Systems, Inc.
20 Middlesex Road
Mansfield, MA 02048
1-800-635-6682
www.renova.com**

© 2012 RENOVA Lighting Systems, Inc.
All Rights Reserved.
Printed in U.S.A.