



Series:  
Bentley LED Wall Pack (BWP)

Fixture Type :  
Medium (General Purpose) LED Wall Pack

Project Name	Fixture Type	Catalog #	Quantity
<input type="text"/>	<input type="text"/>	<input type="text"/>	<input type="text"/>



### Design Features / Specifications

**HOUSING:**

Die Cast Aluminum Housing & Hinged Front Frame, 1/2" Coin Plugs with O-rings for Conduit & Photocell, Textured Architectural Bronze Powdercoat Finish Over a Chromate Conversion Coating

**LENS:**

Molded Prismatic Borosilicate Glass Lens

**MOUNTING:**

Cast-in Template for Mounting Directly Over a 4" Recessed Outlet Box, or Use 1/2" Surface Conduit.

**LED ARRAY:**

Array Lumens: 5788  
Delivered Lumens: 4487  
CRI: 83  
CCT: 5000K  
Rated Life: 50,000 Hours  
5-Year Warranty  
Aluminum Boards

**WATTAGE:**

Array: 41.3w, System: 47w

**DRIVER:**

Electronic Driver, 120-277V, 50/60Hz or 347/480V, 50/60Hz; Dimmable Driver

**LISTING & RATINGS:**

CSA: Listed for Wet Locations

LM-79 Report Available on Select Models.

### Bentley (Medium) Wall Pack

Catalog # Description

**Complete Units**

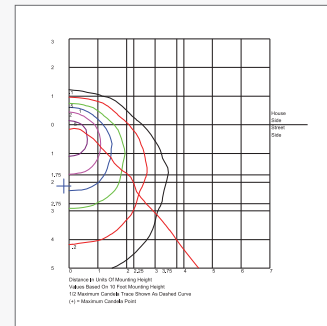
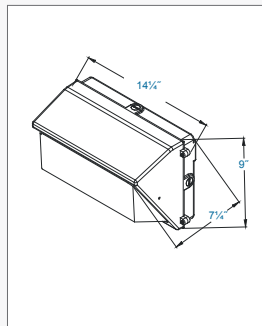
**Ordering Information**

Example: BWP-M-F-1X41-UNV-50K-BRZ

<b>BWP-M</b>	<b>Fixture Series:</b>	BWP-M = Bentley LED Wall Pack (Medium)
<b>F</b>	<b>Optics</b>	F = Medium Beam Spread
<b>1X</b>	<b>Number of LED Arrays:</b>	1X = One
<b>41</b>	<b>Wattage:</b>	41 = 41w
	<b>Driver</b>	UNV = 120v-277v SHV = 347v/480v
<b>50K</b>	<b>Color Temperature:</b>	50K = 5000K
	<b>Color</b>	BRZ=Bronze (Standard) CLR=Custom Color (Specify)
	<b>Mounting</b>	N/A
	<b>Options*</b>	SF = Single Fuse DF=Double Fuse SP = Surge Protection

\* Contact Factory for all Other Options

### Dimensional Information Photometric Information



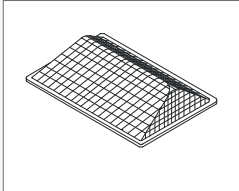
Note: RENOVA products are constantly being improved; therefore, the information shown is subject to change without notice. Always consult your lighting representative or RENOVA Lighting Systems, Inc. for the latest information.



Series:  
Bentley LED Wall Pack (BWP)

Fixture Type :  
Medium (General Purpose) LED Wall Pack

Project Name	Fixture Type	Catalog #	Quantity
<input type="text"/>	<input type="text"/>	<input type="text"/>	<input type="text"/>



BWP-M-WG



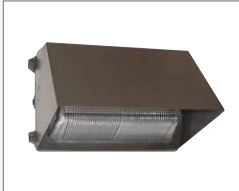
BWP-M-WG (Shown Mounted)



BWP-M-SCA (Shown Mounted)



BWP-M-CP (Shown Mounted)



BWP-M-FCA (Shown Mounted)



3EBL120277

Catalog #	Description
BWP-M-GL	Molded Prismatic Borosilicate Glass Lens with Gasket
BWP-M-FCA	Final Cutoff, Stamped Aluminum, Textured Bronze Finish
BWP-M-SCA	Side Cutoff, Stamped Aluminum, Textured Bronze Finish
BWP-M-CP	Clear Polycarbonate Vandal Resistant Guard
BWP-M-WG	Wire Guard, Stainless Steel Construction
3EBL120277	Provides 90 Minutes of Backup Power

Note: RENOVA products are constantly being improved; therefore, the information shown is subject to change without notice. Always consult your lighting representative or RENOVA Lighting Systems, Inc. for the latest information.