



Series:
ECS Energy Conservation Series

Fixture Type:
MCI Medium Caged Industrial

Project Name	Fixture Type	Catalog #	Quantity
<input type="text"/>	<input type="text"/>	<input type="text"/>	<input type="text"/>



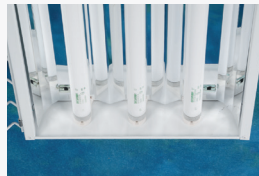
The Medium Caged Industrial (MCI) Series has been developed to provide maximum energy-efficient, cost effective general lighting in a clean, stylized design that is both appealing and functional. The fixture's unique full body housing and wireguard design offers versatility and flexibility in design and is cost effective in a wide range of applications.

Typical applications for this type of product are interior spaces where appearance and performance are important. Applications include:

- *Gymnasiums and other high abuse areas*
- *Industrial Facilities*
- *Commercial / Retail Spaces*
- *Government Facilities*
- *Storage Facilities*
- *Schools and Universities*
- *Warehouse Facilities – Isles and Open Areas*



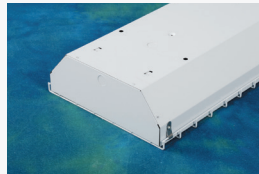
Twist-Lock style Lampholders (Standard)



High Reflectance White Perforated Side Panels (Standard)



Captive Quarter-Turn Fasteners (Allow for Toolless Access to Ballast Compartment)



Mounting Details (Included in all Housings)

Note: RENOVA products are constantly being improved; therefore, the information shown is subject to change without notice. Always consult your lighting representative or RENOVA Lighting Systems, Inc. for the latest information.

Design Features / Specifications

CONSTRUCTION:

- Housing is manufactured from code gauge, die-formed cold rolled steel
- Mechanically fastened for strength and rigidity – Spot welded construction is optional
- Code gauge end caps and internal components
- 7/8" EKO's provided in end caps for row mounting

REFLECTOR / OPTICS:

- Reflectors are precision-formed, per UL aluminum construction standards, multi-faceted for maximum photometric performance
- Choice of reflector materials include High Reflectance White finish and Alanod Miro4 specular finish. Other options are available – consult factory
- Reflectors / Ballast Covers are easily removed without the use of tools

WIREGUARD:

- Heavy duty, spot welded steel construction
- Gloss white polyester powder coat baked white enamel finish.
- Wireguard swings down to provide easy access to lamp compartment

ELECTRICAL:

- All standard ballasts are instant start or program rapid start, UL listed, CEE rated high efficiency electronic, Class "P", Sound Rated "A", RoHS compliant and are the universal voltage (120v–277v) type. All ballasts are mechanically fastened into fixture housing. Other voltages are available – consult factory
- Many other lamp / ballast & wiring configurations are available – consult factory for all other available options
- All fixtures include Ballast (Luminaire) Disconnects as per UL 1598 standards

FINISH:

- Pre-painted gloss white polyester powder coat baked white enamel finish is standard
- Post-painted gloss white polyester powder coat baked white enamel finish is optional
- Custom colors are optional

LAMP HOLDERS:

- Twist-Lock style, snap-in, thermoplastic type ensure positive lamp retention
- High temperature rated (T-Rating)

INSTALLATION:

- Fixture can be mounted several ways: Surface, Pendant, Chain or Cable

CERTIFICATIONS:

- All fixtures are UL/CUL Listed and labeled
- Suitable for damp locations



Scan for additional information on this fixture type.

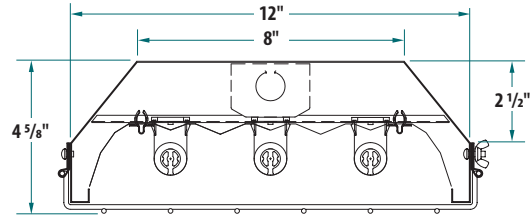


Innovative Lighting Ideas
Energy Efficient Solutions

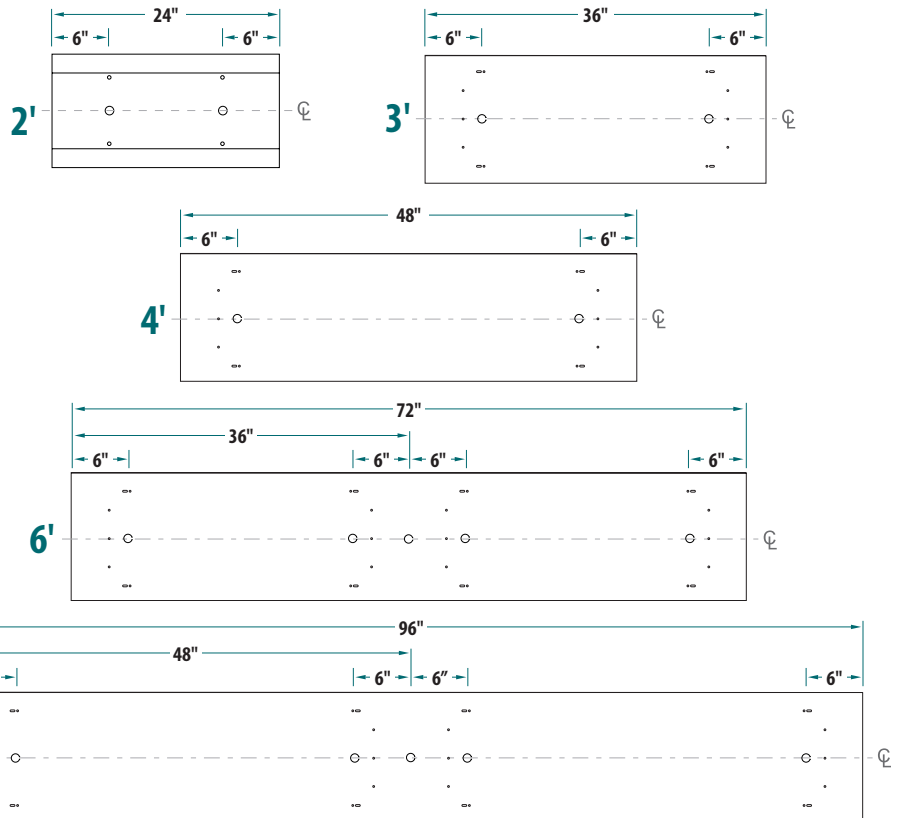
Series:
ECS Energy Conservation Series

Fixture Type:
MCI Medium Caged Industrial

3-Lamp T8 Medium Caged Industrial Cross Section

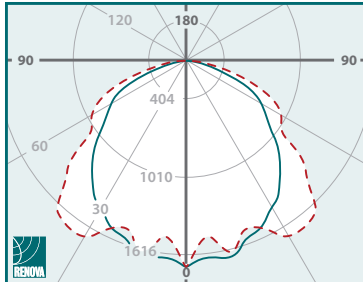


Fixture Housing Dimensions



Note: Unless otherwise specified, all EKO's are 7/8" diameter.

2 Lamp Photometric Data



ECS-MCI4-MN-232-UNV-12N-0WW

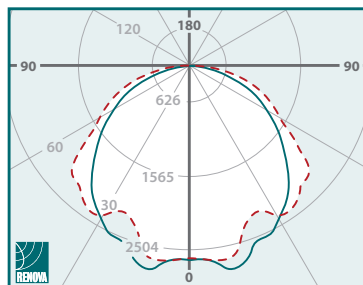
Internal Test Report #: 07552

Total Luminaire Efficiency: 94.9%

Spacing Criterion:

- 0 deg 1.17 - - - 90 deg 1.43
- 180 deg 1.17 - - - 270 deg 1.43

3 Lamp Photometric Data



ECS-MCI4-MN-332-UNV-13N-0WW

Internal Test Report #: 07553

Total Luminaire Efficiency: 92.5%

Spacing Criterion:

- 0 deg 1.30 - - - 90 deg 1.33
- 180 deg 1.30 - - - 270 deg 1.33

*Please see website for all other photometric data.

Ordering Information

Series	Fixture Type	Size	Reflector Material	Optics (Distribution)	# of Lamps	Lamp Type (Wattage)	Ballast Voltage	# of Ballasts	# Lamps per Ballast	Ballast Factor	Ballast Type	Options
ECS	MCI											
Energy Conservation Series	Medium Caged Industrial	2 - 24" 3 - 36" 4 - 48" 6 - 72" 8 - 96"	M - Miro4 (95% TR) W - White (91% TR)	F - Focused N - Normal S - Spread C - Custom *N - Normal is standard *C - Custom optics are described in "Options" box	1 - 1 Lamp 2 - 2 Lamp 3 - 3 Lamp 4 - 4 Lamp 2; 3; or 4' Hsg 2 - 2 Lamp 4 - 4 Lamp 6 - 6 Lamp 8 - 8 Lamp 6' and 8' Hsg	17 - (2') 17w T8 25 - (3') 25w T8 32 - (4') 32w T8 14 - (2') 14w T5 21 - (3') 21w T5 28 - (4') 28w T5 24 - (2') 24w TSHO 39 - (3') 39w TSHO 54 - (4') 54w TSHO	120 - 120v, 60 Hz 277 - 277v, 60 Hz UNV - 120v-277v, 60 Hz (Multi-Tap) 347 - 347v, 60 Hz 480 - 480v, 60 Hz xxx - Less Ballast *UNV - Universal voltage is standard	5 - Slave (Less Ballast) 1 - 1 2 - 2 3 - 3 4 - 4	0 - 0 1 - 1 2 - 2 3 - 3 4 - 4 *If "S" was used in "# of Ballasts" box, mark as "0" *Use suffix "M" for Master (Example: 4M)	L - Low N - Normal H - High *If "S" was used in "# of Ballasts" box, mark as "0"	IST - Instant Start RST - Rapid Start LVD - Low Voltage Dimming DIM - Line Voltage Dimming SDM - Step-Dimming	ADDITIONAL OPTIONS <i>(Please see separate "Options Sheet" for all available options)</i>



Fluorescent lamps contain small amounts of mercury. Such lamps are labeled "Contains Mercury" and / or with the symbol "Hg." Lamps that contain mercury must be disposed of in accordance with local requirements. Information regarding lamp recycling and disposal can be found at www.lamprecycle.org.