



Series:
ECS Energy Conservation Series

Fixture Type:
MGM Magnum

Project Name	Fixture Type	Catalog #	Quantity
<input type="text"/>	<input type="text"/>	<input type="text"/>	<input type="text"/>



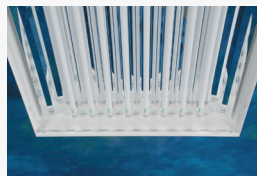
The Magnum (MGM) Series has been developed to provide maximum energy-efficient, cost effective medium / high bay lighting in a clean, stylized and rugged design that is both appealing and functional. The fixture's unique full body housing offers versatility and flexibility in design and is cost effective in a wide range of applications.

Typical applications for this type of product are interior spaces with high mounting heights where high lumen output is required and an aesthetic look is desired. Applications include:

- *Gymnasiums & Athletic Facilities*
- *Industrial Facilities*
- *Commercial / Retail Spaces*
- *Government Facilities*
- *Storage Facilities*
- *Manufacturing Facilities*
- *Warehouse Facilities – Isles and Open Areas*



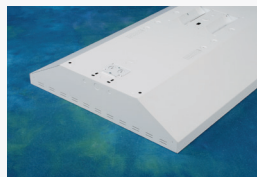
Twist-Lock style Lampholders (Standard)



Multi-Faceted Reflector (Designed for Maximum Efficiency and Optimal Distribution)



Flush Mount J-Box (Standard) (Consult Factory for All Available Mounting Options)



Mounting Details (Included in all Housings)

Note: RENOVA products are constantly being improved; therefore, the information shown is subject to change without notice. Always consult your lighting representative or RENOVA Lighting Systems, Inc. for the latest information.

Design Features / Specifications

CONSTRUCTION:

- Housing is manufactured from code gauge, die-formed cold rolled steel
- Spot welded construction for strength and rigidity
- Code gauge end caps and internal components
- Venting of lamp and ballast compartments are standard
- Integral single "Hub" mounting point built into fixture housing

REFLECTOR / OPTICS:

- Reflectors are precision-formed, per UL aluminum construction standards, multi-faceted for maximum photometric performance
- Choice of reflector materials include High Reflectance White finish and Alanod Miro4 specular finish. Other options available – consult factory
- Custom reflector profiles are optional depending on required beam spread
- Reflectors are easily removed without the use of tools

WIREGUARD (OPTIONAL):

- Heavy duty, spot welded steel construction
- Gloss white polyester powder coat baked white enamel finish.
- Wireguard swings down to provide easy access to lamp compartment

LENS / DIFFUSER (OPTIONAL):

- Lens assembly swings away to provide easy access to lamp compartment
- Many lens / diffuser options and combinations are available – consult factory

ELECTRICAL:

- All standard ballasts are instant start or program rapid start, UL listed, CEE rated high efficiency electronic, Class "P", Sound Rated "A", RoHS compliant and are the universal voltage (120v–277v) type. All ballasts are mechanically fastened into fixture housing. Other voltages are available – consult factory
- Many other lamp / ballast & wiring configurations are available – consult factory for all other available options
- All fixtures include Ballast (Luminaire) Disconnects as per UL 1598 standards

FINISH:

- Post-painted gloss white polyester powder coat baked white enamel finish is standard
- Custom colors are optional

LAMPHOLDERS:

- Twist-Lock style, snap-in, thermoplastic type ensure positive lamp retention
- High temperature rated (T-Rating)

INSTALLATION:

- Fixture can be mounted several ways: Surface, Pendant, Chain or Cable

CERTIFICATIONS:

- All fixtures are UL/CUL Listed and labeled
- Suitable for damp locations



Scan for additional information on this fixture type.

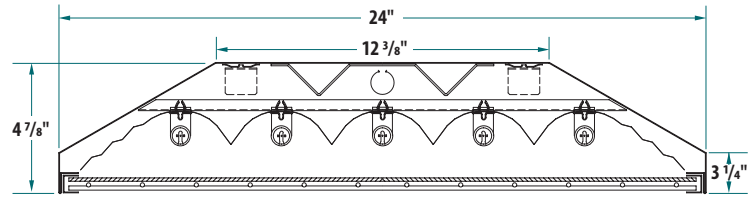


Innovative Lighting Ideas
Energy Efficient Solutions

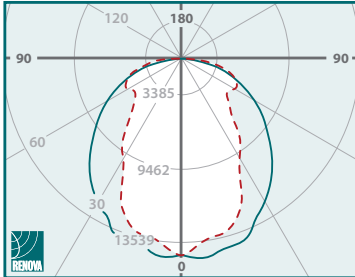
Series:
ECS Energy Conservation Series

Fixture Type:
MGM Magnum

5-Lamp T5 HO Magnum Cross Section



6 Lamp Photometric Data

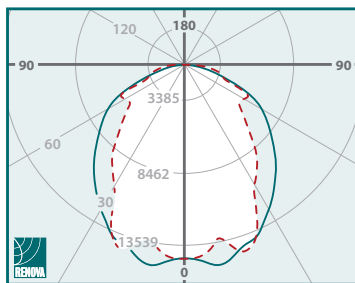


ECS-MGM4-MN-654-UNV-32H-00W

Internal Test Report #: 05413
Total Luminaire Efficiency: 95.2%
Spacing Criterion:

- 0 deg 1.24 - - 90 deg 0.95
- 180 deg 1.24 - - 270 deg 0.95

8 Lamp Photometric Data



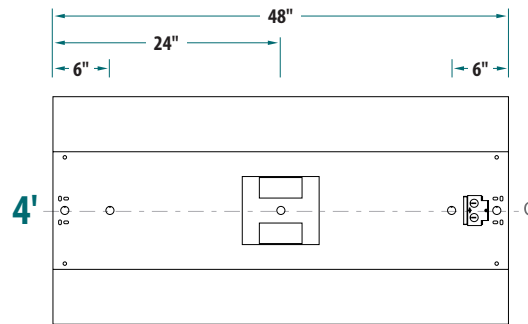
ECS-MGM4-MN-854-UNV-24H-00W

Internal Test Report #: 05421
Total Luminaire Efficiency: 93.3%
Spacing Criterion:

- 0 deg 1.27 - - 90 deg 1.10
- 180 deg 1.27 - - 270 deg 1.10

*Please see website for all other photometric data.

Fixture Housing Dimensions



Note: Unless otherwise specified, all EKO's are 7/8" diameter.

Ordering Information

Series	Fixture Type	Size	Reflector Material	Optics (Distribution)	# of Lamps	Lamp Type (Wattage)	Ballast Voltage	# of Ballasts	# Lamps per Ballast	Ballast Factor	Ballast Type	Options
ECS	MGM											
Energy Conservation Series	Magnum	4 - 48"	M - Miro4 (95% TR) W - White (91% TR)	F - Focused N - Normal S - Spread C - Custom *N - Normal is standard *C - Custom optics are described in "Options" box	4 - 4 Lamp 5 - 5 Lamp 6 - 6 Lamp 7 - 7 Lamp 8 - 8 Lamp	32 - (4') 32w T8 54 - (4') 54w T5HO	120 - 120v, 60 Hz 277 - 277v, 60 Hz UNV - 120v-277v, 60 Hz (Multi-Tap) 347 - 347v, 60 Hz 480 - 480v, 60 Hz xxx - Less Ballast *UNV - Universal voltage is standard	1 - 1 2 - 2 3 - 3 4 - 4	1 - 1 2 - 2 3 - 3 4 - 4	L - Low N - Normal H - High	IST - Instant Start RST - Rapid Start LVD - Low Voltage Dimming DIM - Line Voltage Dimming SDM - Step-Dimming	OOW - Open Style OWW - White Wire-Guard AOW - Clear Acrylic Lens AWW - White Wire-Guard & Clear Acrylic Lens ADDITIONAL OPTIONS (Please see separate "Options Sheet" for all available options)



Fluorescent lamps contain small amounts of mercury. Such lamps are labeled "Contains Mercury" and / or with the symbol "Hg." Lamps that contain mercury must be disposed of in accordance with local requirements. Information regarding lamp recycling and disposal can be found at www.lamprecycle.org.