



Series: **ECS Energy Conservation Series**      Fixture Type: **SVW Standard Vanity Wrap**

Project Name	Fixture Type	Catalog #	Quantity
<input type="text"/>	<input type="text"/>	<input type="text"/>	<input type="text"/>



The Standard Vanity Wrap (SVW) Series has been developed to provide maximum energy-efficient, cost effective general lighting in a clean, narrow profile design that is both appealing and functional. The linear prism design along each side of the lens allows for optimal light distribution while minimizing glare. The fixture profile is well suited for stairwells, corridors and vanities.

Typical applications for this type of product are interior spaces where finished ceilings and walls exist. Applications include:

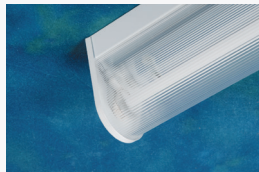
- Office Buildings
- Industrial Facilities
- Commercial / Retail Spaces
- Schools and Universities
- Hospitals / Healthcare Facilities
- Government Facilities
- Military Bases



Twist-Lock style Lampholders (Standard)



Multi-Faceted Reflector (Designed for Maximum Efficiency and Optimal Distribution)



White Opalescent Lens is Standard (Clear Lens Shown is Optional) (Extruded Linear Prisms)



Mounting Details (Included in all Housings)

Note: RENOVA products are constantly being improved; therefore, the information shown is subject to change without notice. Always consult your lighting representative or RENOVA Lighting Systems, Inc. for the latest information.

### Design Features / Specifications

#### CONSTRUCTION:

- Housing is manufactured from code gauge, die-formed cold rolled steel.
- Mechanically fastened for strength and rigidity – Spot welded construction is optional.
- Code gauge end caps and internal components.

#### REFLECTOR / OPTICS:

- Reflectors are precision-formed, per UL aluminum construction standards, multi-faceted for maximum photometric performance.
- Choice of reflector materials include High Reflectance White finish and Alanod Miro4 specular finish. Other options available – consult factory.
- Reflectors / Ballast Covers are easily removed without the use of tools.

#### ELECTRICAL:

- All standard ballasts are instant start or program rapid start, UL listed, CEE rated high efficiency electronic, Class "P", Sound Rated "A", RoHS compliant and are the universal voltage (120v–277v) type. All ballasts are mechanically fastened into fixture housing. Other voltages are available – consult factory.
- Many other lamp / ballast & wiring configurations are available – consult factory for all other available options.
- All fixtures include Ballast (Luminaire) Disconnects as per UL 1598 standards.

#### FINISH:

- Pre-painted gloss white polyester powder coat baked white enamel finish is standard.
- Post-painted gloss white polyester powder coat baked white enamel finish is optional.
- Custom colors are optional.

#### LENS / DIFFUSER:

- High quality, high light transmission, frosted acrylic / polymer blend is standard.
- 30% "DR" additive for improved resistance to breakage is standard. 50% DR is optional.
- Clear, 100% virgin acrylic with extruded linear prisms is optional.
- Polycarbonate material is optional – consult factory.
- Extruded, linear prisms along entire length of lens.

#### LAMP HOLDERS:

- Twist-Lock style, snap-in, thermoplastic type ensure positive lamp retention.
- High temperature rated (T-Rating).

#### INSTALLATION:

- Fixture can be mounted several ways: Surface, Pendant, Chain or Cable.
- For Row Mounting, please provide row information prior to production.
- Row Mounting requires special connectors and light leak shields.

#### CERTIFICATIONS:

- All fixtures are UL/CUL Listed and labeled.
- Suitable for damp locations.

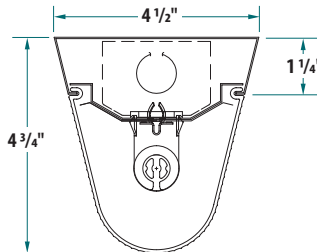


Scan for additional information on this fixture type.

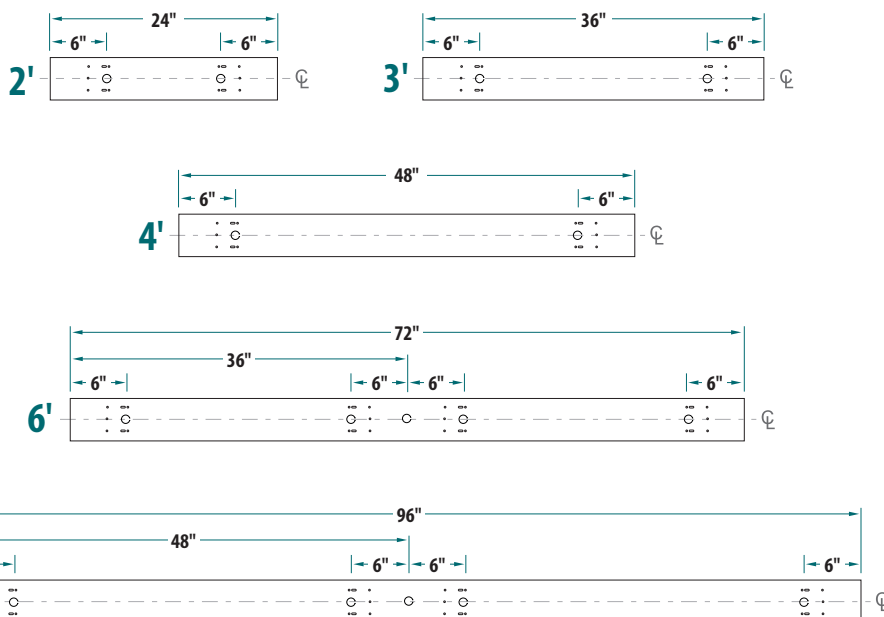


Series: **ECS Energy Conservation Series**      Fixture Type: **SVW Standard Vanity Wrap**

**1-Lamp T8 Standard Vanity Wrap Cross Section**

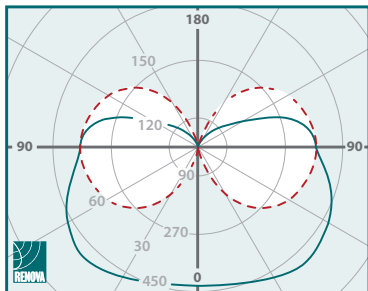


**Fixture Housing Dimensions**



Note: Unless otherwise specified, all EKO's are 7/8" diameter.

**1 Lamp Photometric Data**



**ECS-SVW4-WN-132-UNV-11L-CRL**

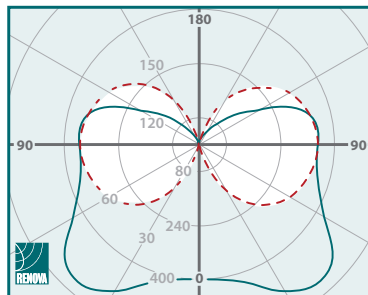
Independent Test Report #: 21385

Total Luminaire Efficiency: 92.4%

Spacing Criterion:

- 0 deg 1.83      - - 90 deg 1.27
- 180 deg 0.91      - - 270 deg 1.27

**1 Lamp Photometric Data**



**ECS-SVW4-MN-132-UNV-12L-CRI**

Independent Test Report #: 21384

Total Luminaire Efficiency: 92.2%

Spacing Criterion:

- 0 deg 2.03      - - 90 deg 1.27
- 180 deg 0.95      - - 270 deg 1.27

\*Please see website for all other photometric data.

**Ordering Information**

Series	Fixture Type	Size	Reflector Material	Optics (Distribution)	# of Lamps	Lamp Type (Wattage)	Ballast Voltage	# of Ballasts	# Lamps per Ballast	Ballast Factor	Ballast Type	Lens Type	Options
<b>ECS</b>	<b>SVW</b>												
Energy Conservation Series	Standard Vanity Wrap	2 - 24" 3 - 36" 4 - 48" 6 - 72" 8 - 96"	M - Miro4 (95% TR) W - White (91% TR) C - Custom (Specify)	N - Normal C - Custom  *N - Normal is standard *C - Custom optics are described in "Options" box	1 - 1 Lamp 2; 3; or 4' Hsg 2 - 2 Lamp 6' and 8' Hsg	17 - (2') 17w T8 25 - (3') 25w T8 32 - (4') 32w T8  14 - (2') 14w T5 21 - (3') 21w T5 28 - (4') 28w T5  24 - (2') 24w TSHO 39 - (3') 39w TSHO 54 - (4') 54w TSHO	120 - 120v, 60 Hz 277 - 277v, 60 Hz UNV - 120v-277v, 60 Hz (Multi-Tap) 347 - 347v, 60 Hz 480 - 480v, 60 Hz xxx - Less Ballast  *UNV - Universal voltage is standard	5 - Slave (Less Ballast) 1 - 1 2 - 2 3 - 3 4 - 4	0 - 0 1 - 1 2 - 2 3 - 3 4 - 4	L - Low N - Normal H - High  *If "S" was used in "# of Ballasts" box, mark as "0"	IST - Instant Start RST - Rapid Start LVD - Low Voltage Dimming DIM - Line Voltage Dimming SDM - Step-Dimming	AF - Acrylic (Frosted) AC - Acrylic (Clear)  *AF - Acrylic (Frosted) is standard	<b>ADDITIONAL OPTIONS</b>  (Please see separate "Options Sheet" for all available options)  <b>PLEASE SPECIFY THE FOLLOWING FOR ROW MOUNTING:</b> I - Individual M - Mid E - End

Fluorescent lamps contain small amounts of mercury. Such lamps are labeled "Contains Mercury" and/or with the symbol "Hg." Lamps that contain mercury must be disposed of in accordance with local requirements. Information regarding lamp recycling and disposal can be found at [www.lamprecycle.org](http://www.lamprecycle.org).

