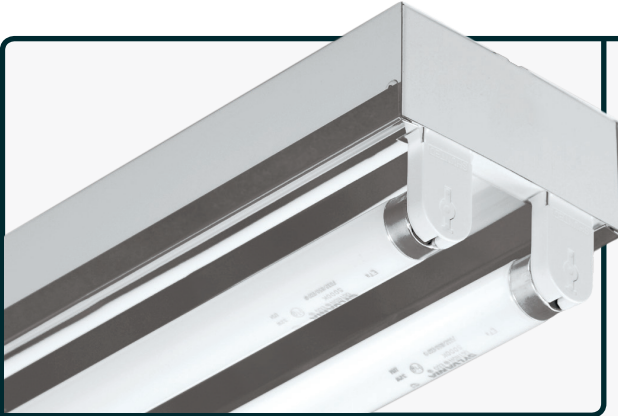




Series:  
**ECS Energy Conservation Series**

Fixture Type :  
**SGS Standard Grade Strip**

Project Name	Fixture Type	Catalog #	Quantity
<input type="text"/>	<input type="text"/>	<input type="text"/>	<input type="text"/>



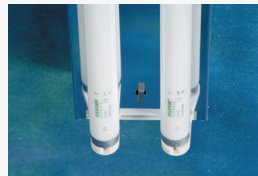
The Standard Grade Strip (SGS) Series has been developed to provide maximum energy-efficient, cost effective general lighting in a clean, streamlined design that is both appealing and functional. The fixture's unique channel design offers rigidity and stability not found in similar products from other manufacturers. The SGS series offers versatility and flexibility in design and is cost effective in a wide range of applications.

Typical applications for this type of product are interior spaces where appearance and performance are important. Applications include:

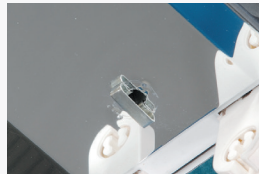
- Industrial Facilities
- Commercial / Retail Spaces
- Warehouse Facilities – Isles and Open Areas
- Government Facilities
- Storage Facilities
- Schools and Universities



Twist-Lock style Lampholders (Standard)



Multi-Faceted Reflector (Designed for Maximum Efficiency and Optimal Distribution)



Captive Quarter-Turn Fastener (Allows Toolless Access to Ballast Compartment)



Mounting Details (Included in all Housings)

Note: RENOVA products are constantly being improved; therefore, the information shown is subject to change without notice. Always consult your lighting representative or RENOVA Lighting Systems, Inc. for the latest information.

## Design Features / Specifications

### CONSTRUCTION:

- Housing is manufactured from code gauge, die-formed cold rolled steel
- Mechanically fastened for strength and rigidity – Spot welded construction is optional
- Code gauge end caps and internal components
- 7/8" EKO's provided in end caps for row mounting

### BALLAST COVER:

- Ballast covers are precision-formed, per UL aluminum construction standards, or code gauge mild steel – depending on model ordered
- Choice of ballast cover materials include High Reflectance White finish and Alanod Miro4 specular finish. Other options are available – consult factory
- Ballast Covers are easily removed without the use of tools

### ELECTRICAL:

- All standard ballasts are instant start or program rapid start, UL listed, CEE rated high efficiency electronic, Class "P", Sound Rated "A", RoHS compliant and are the universal voltage (120v–277v) type. All ballasts are mechanically fastened into fixture housing. Other voltages are available – consult factory
- Many other lamp / ballast & wiring configurations are available – consult factory for all other available options
- All fixtures include Ballast (Luminaire) Disconnects as per UL 1598 standards

### FINISH:

- Pre-painted gloss white polyester powder coat baked white enamel finish is standard
- Post-painted gloss white polyester powder coat baked white enamel finish is optional
- Custom colors are optional

### LAMP HOLDERS:

- Twist-Lock style, snap-in, thermoplastic type ensure positive lamp retention
- High temperature rated (T-Rating)

### INSTALLATION:

- Fixture can be mounted several ways: Surface, Pendant, Chain or Cable

### CERTIFICATIONS:

- All fixtures are UL/CUL Listed and labeled
- Suitable for damp locations



Scan for additional information on this fixture type.

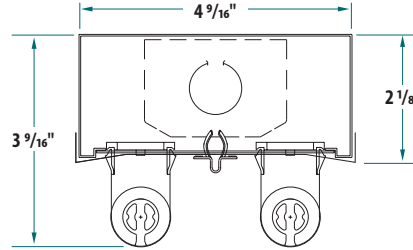


Innovative Lighting Ideas  
Energy Efficient Solutions

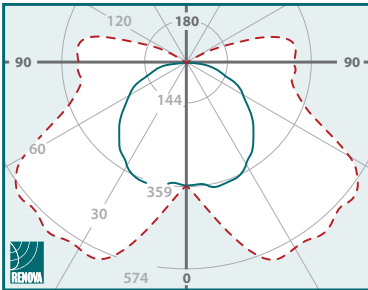
Series:  
**ECS Energy Conservation Series**

Fixture Type :  
**SGS Standard Grade Strip**

### 2-Lamp T8 Standard Grade Strip Cross Section



### 1 Lamp Photometric Data

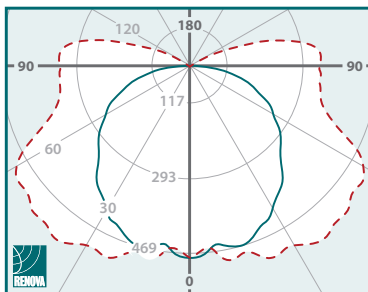


**ECS-SGS4-MN-132-UNV-11N**

Internal Test Report #: 04515  
Total Luminaire Efficiency: 96.0%  
Spacing Criterion:

- 0 deg 1.37      - - - 90 deg 2.45
- 180 deg 1.37      - - - 270 deg 2.45

### 1 Lamp Photometric Data

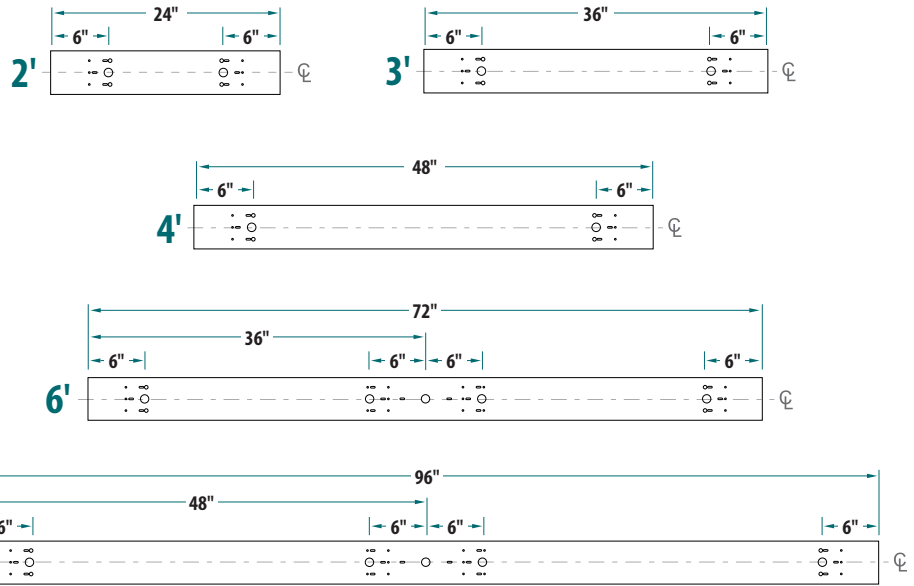


**ECS-SGS4-WN-132-UNV-11N**

Internal Test Report #: 04523  
Total Luminaire Efficiency: 94.1%  
Spacing Criterion:

- 0 deg 1.23      - - - 90 deg 1.59
- 180 deg 1.23      - - - 270 deg 1.59

### Fixture Housing Dimensions



Note: Unless otherwise specified, all EKO's are 7/8" diameter.

\*Please see website for all other photometric data.

## Ordering Information

Series	Fixture Type	Size	Reflector Material	Optics (Distribution)	# of Lamps	Lamp Type (Wattage)	Ballast Voltage	# of Ballasts	# Lamps per Ballast	Ballast Factor	Ballast Type	Options
<b>ECS</b>	<b>SGS</b>											
<b>Energy Conservation Series</b>	Standard Grade Strip	2 - 24" 3 - 36" 4 - 48" 6 - 72" 8 - 96"	<b>M</b> - Miro4 (95% TR) <b>W</b> - White (91% TR) <b>B</b> - Ballast Cover (White) (83% TR min.)	<b>N</b> - Normal <i>*N - Normal is standard</i>	1 - 1 Lamp 2 - 2 Lamp 3 - 3 Lamp 4 - 4 Lamp* 4 - 4 Lamp 4 - 4 Lamp 6 - 6 Lamp 8 - 8 Lamp* 6' and 8' Hsg *15 Lamp Only	17 - (2') 17w T8 25 - (3') 25w T8 32 - (4') 32w T8  14 - (2') 14w T5 21 - (3') 21w T5 28 - (4') 28w T5  24 - (2') 24w TSHO 39 - (3') 39w TSHO 54 - (4') 54w TSHO	120 - 120v, 60 Hz 277 - 277v, 60 Hz <b>UNV</b> - 120v-277v, 60 Hz (Multi-Tap) 347 - 347v, 60 Hz 480 - 480v, 60 Hz <b>xxx</b> - Less Ballast  <i>*UNV - Universal voltage is standard</i>	5 - Slave (Less Ballast) 1 - 1 2 - 2 3 - 3 4 - 4	0 - 0 1 - 1 2 - 2 3 - 3 4 - 4  <i>*If "S" was used in "# of Ballasts" box, mark as "0"</i>  <i>*Use suffix "M" for Master (Example: 4M)</i>	<b>L</b> - Low <b>N</b> - Normal <b>H</b> - High  <i>*If "S" was used in "# of Ballasts" box, mark as "0"</i>	<b>IST</b> - Instant Start <b>RST</b> - Rapid Start <b>LVD</b> - Low Voltage Dimming <b>DIM</b> - Line Voltage Dimming <b>SDM</b> - Step-Dimming	<b>ADDITIONAL OPTIONS</b> <i>(Please see separate "Options Sheet" for all available options)</i>

Fluorescent lamps contain small amounts of mercury. Such lamps are labeled "Contains Mercury" and / or with the symbol "Hg." Lamps that contain mercury must be disposed of in accordance with local requirements. Information regarding lamp recycling and disposal can be found at [www.lamprecycle.org](http://www.lamprecycle.org).