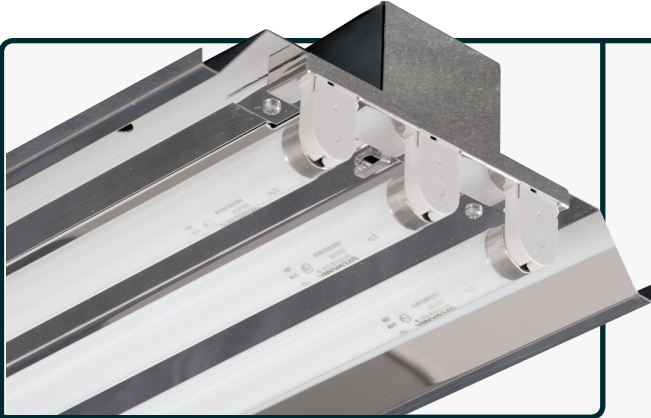




Series:  
**ECS Energy Conservation Series**

Fixture Type:  
**ULI UltraLyte Industrial**

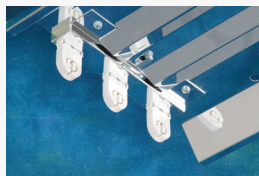
Project Name	Fixture Type	Catalog #	Quantity
<input type="text"/>	<input type="text"/>	<input type="text"/>	<input type="text"/>



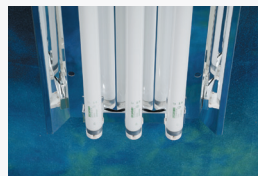
The UltraLyte Industrial (ULI) Series has been developed to provide maximum energy-efficient, cost effective general lighting in a clean, streamlined design that is both appealing and functional. The fixture's unique channel design offers rigidity and stability in a reduced weight configuration. The ULI series offers versatility and flexibility in design and is cost effective in a wide range of applications.

Typical applications for this type of product are interior spaces where appearance and performance are important. Applications include:

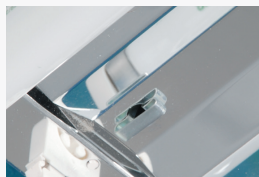
- Industrial Facilities
- Commercial / Retail Spaces
- Warehouse Facilities – Isles and Open Areas
- Government Facilities
- Storage Facilities
- Schools and Universities



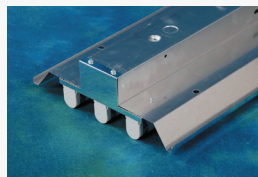
Twist-Lock style Lampholders (Standard)



Multi-Faceted Reflector (Designed for Maximum Efficiency and Optimal Distribution)



Captive Quarter-Turn Fastener (Allows Toolless Access to Ballast Compartment)



Mounting Details (Included in all Housings)

Note: RENOVA products are constantly being improved; therefore, the information shown is subject to change without notice. Always consult your lighting representative or RENOVA Lighting Systems, Inc. for the latest information.

## Design Features / Specifications

### CONSTRUCTION:

- Housing is manufactured from code gauge, die-formed aluminum alloy
- Mechanically fastened for strength and rigidity
- Code gauge end caps and internal components
- 7/8" EKO's provided in end caps for row mounting

### REFLECTOR / OPTICS:

- Reflectors are precision-formed, per UL aluminum construction standards, multi-faceted for maximum photometric performance
- Choice of reflector materials include High Reflectance White finish and Alanod Miro4 specular finish. Other options available – consult factory
- Reflectors / Ballast Covers are easily removed without the use of tools

### ELECTRICAL:

- All standard ballasts are instant start or program rapid start, UL listed, CEE rated high efficiency electronic, Class "P", Sound Rated "A", RoHS compliant and are the universal voltage (120v–277v) type. All ballasts are mechanically fastened into fixture housing. Other voltages are available – consult factory
- Many other lamp / ballast & wiring configurations are available – consult factory for all other available options
- All fixtures include Ballast (Luminaire) Disconnects as per UL 1598 standards

### FINISH:

- Anodized, specular aluminum is standard when ordering Miro4 Reflector option
- Pre-painted gloss white polyester powder coat baked white enamel finish is standard when ordering High Reflectance White Reflector option

### LAMP HOLDERS:

- Twist-Lock style, snap-in, thermoplastic type ensure positive lamp retention
- High temperature rated (T-Rating)

### INSTALLATION:

- Fixture can be mounted several ways: Surface, Pendant, Chain or Cable

### CERTIFICATIONS:

- All fixtures are UL/CUL Listed and labeled
- Suitable for damp locations



Scan for additional information on this fixture type.

**VETERAN OWNED AND OPERATED**

UL LISTED

ILLUMINATING ENGINEERING SOCIETY Sustaining Member

SME Society of Manufacturing Engineers

NTMA NATIONAL TOOLING AND MACHINING ASSOCIATION

NEMA Member

ARRA Funding Compliant

Made in USA

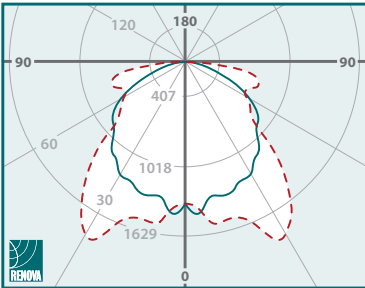


Innovative Lighting Ideas  
Energy Efficient Solutions

Series:  
**ECS Energy Conservation Series**

Fixture Type:  
**ULI UltraLyte Industrial**

### 2 Lamp Photometric Data



**ECS-ULI4-MN-232-UNV-12N**

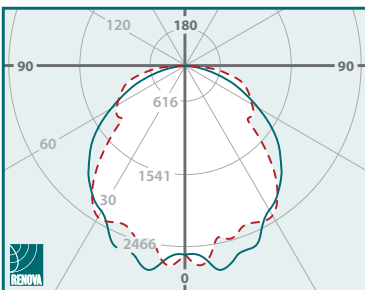
Internal Test Report #: 07361

Total Luminaire Efficiency: 91.0%

Spacing Criterion:

- 0 deg 1.32      - - 90 deg 1.62
- 180 deg 1.32    - - 270 deg 1.62

### 3 Lamp Photometric Data



**ECS-ULI4-MN-332-UNV-13N**

Internal Test Report #: 07362

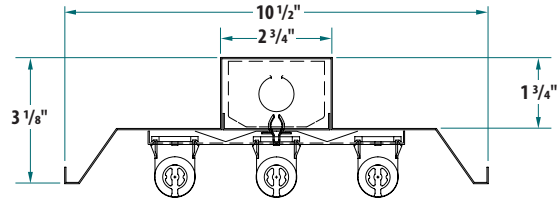
Total Luminaire Efficiency: 89.4%

Spacing Criterion:

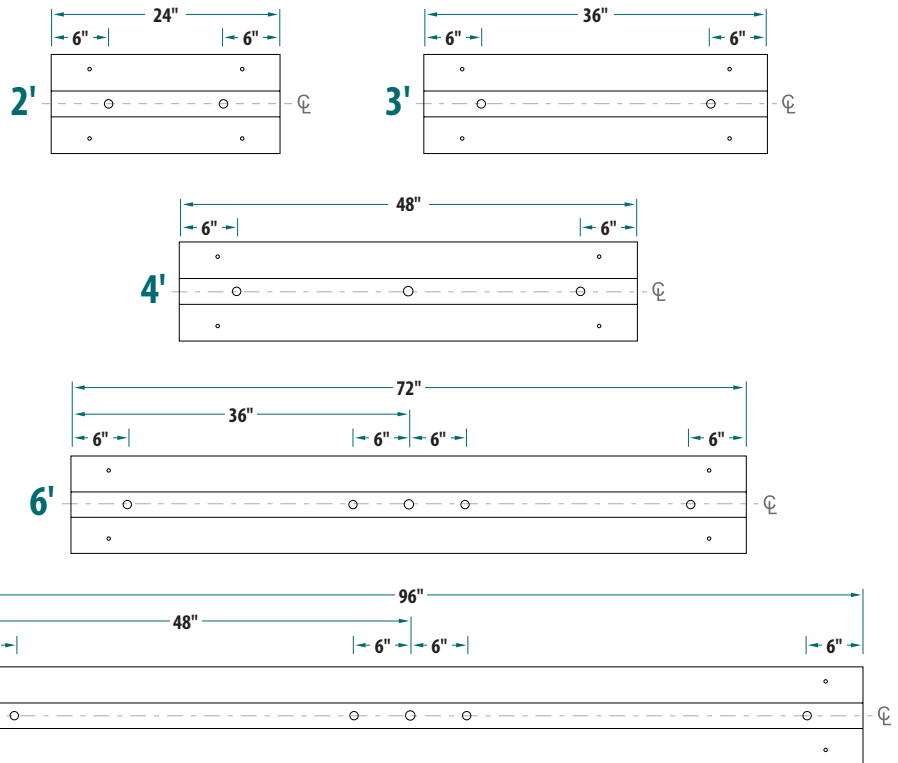
- 0 deg 1.30      - - 90 deg 1.32
- 180 deg 1.30    - - 270 deg 1.32

\*Please see website for all other photometric data.

### 3-Lamp T8 UltraLyte Industrial Cross Section



### Fixture Housing Dimensions



Note: Unless otherwise specified, all EKO's are 7/8" diameter.

## Ordering Information

Series	Fixture Type	Size	Reflector Material	Optics (Distribution)	# of Lamps	Lamp Type (Wattage)	Ballast Voltage	# of Ballasts	# Lamps per Ballast	Ballast Factor	Ballast Type	Options
<b>ECS</b>	<b>ULI</b>											
Energy Conservation Series	UltraLyte Industrial	2 - 24" 3 - 36" 4 - 48" 6 - 72" 8 - 96"	M - Miro4 (95% TR) W - White (91% TR)	F - Focused N - Normal S - Spread C - Custom  *N - Normal is standard *C - Custom optics are described in "Options" box	1 - 1 Lamp 2 - 2 Lamp 3 - 3 Lamp 4 - 4 Lamp 2: 3; or 4' Hsg 2 - 2 Lamp 4 - 4 Lamp 6 - 6 Lamp 8 - 8 Lamp 6' and 8' Hsg	17 - (2') 17w T8 25 - (3') 25w T8 32 - (4') 32w T8  14 - (2') 14w T5 21 - (3') 21w T5 28 - (4') 28w T5  24 - (2') 24w TSHO 39 - (3') 39w TSHO 54 - (4') 54w TSHO	120 - 120v, 60 Hz 277 - 277v, 60 Hz UNV - 120v-277v, 60 Hz (Multi-Tap) 347 - 347v, 60 Hz 480 - 480v, 60 Hz xxx - Less Ballast  *UNV - Universal voltage is standard	5 - Slave (Less Ballast) 1 - 1 2 - 2 3 - 3 4 - 4	1 - 1 2 - 2 3 - 3 4 - 4  *If "S" was used in "# of Ballasts" box, mark as "0"  *Use suffix "M" for Master (Example: 4M)	L - Low N - Normal H - High  *If "S" was used in "# of Ballasts" box, mark as "0"	IST - Instant Start RST - Rapid Start LVD - Low Voltage Dimming DIM - Line Voltage Dimming SDM - Step-Dimming	<b>ADDITIONAL OPTIONS</b>  (Please see separate "Options Sheet" for all available options)



Fluorescent lamps contain small amounts of mercury. Such lamps are labeled "Contains Mercury" and / or with the symbol "Hg." Lamps that contain mercury must be disposed of in accordance with local requirements. Information regarding lamp recycling and disposal can be found at [www.lamprecycle.org](http://www.lamprecycle.org).