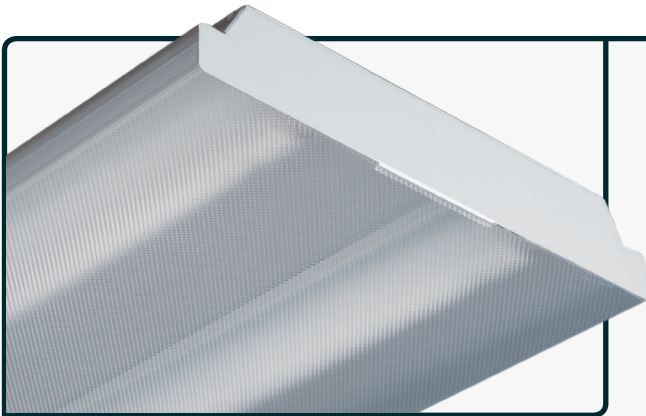




Series:
ECS Energy Conservation Series

Fixture Type:
WPW Wide Profile Wrap

Project Name	Fixture Type	Catalog #	Quantity
<input type="text"/>	<input type="text"/>	<input type="text"/>	<input type="text"/>



The Wide Profile Wrap (WPW) Series has been developed to provide maximum energy-efficient, cost effective general lighting in a clean, low profile design that is both appealing and functional. The linear prism design along each side of the lens allows for optimal light distribution while minimizing glare. The wide housing profile allows for many lamp configurations.

Typical applications for this type of product are interior spaces where finished ceilings exist. Applications include:

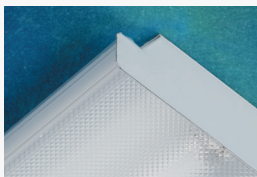
- Office Buildings
- Industrial Facilities
- Commercial / Retail Spaces
- Schools and Universities
- Hospitals / Healthcare Facilities
- Government Facilities
- Military Bases



Twist-Lock style Lampholders (Standard)



Multi-Faceted Reflector (Designed for Maximum Efficiency and Optimal Distribution)



Standard Lens (Bottom: Pattern 12 Prismatic Embossment) (Side: Linear Prisms)



Mounting Details (Included in all Housings)

Note: RENOVA products are constantly being improved; therefore, the information shown is subject to change without notice. Always consult your lighting representative or RENOVA Lighting Systems, Inc. for the latest information.

Design Features / Specifications

CONSTRUCTION:

- Housing is manufactured from code gauge, die-formed cold rolled steel
- Mechanically fastened for strength and rigidity – Spot welded construction is optional
- Code gauge end caps and internal components
- 7/8" EKO's provided in end caps for row mounting

REFLECTOR / OPTICS:

- Reflectors are precision-formed, per UL aluminum construction standards, multi-faceted for maximum photometric performance
- Choice of reflector materials include High Reflectance White finish and Alanod Miro4 specular finish. Other options available – consult factory
- Reflectors / Ballast Covers are easily removed without the use of tools

ELECTRICAL:

- All standard ballasts are instant start or program rapid start, UL listed, CEE rated high efficiency electronic, Class "P", Sound Rated "A", RoHS compliant and are the universal voltage (120v–277v) type. All ballasts are mechanically fastened into fixture housing. Other voltages are available – consult factory
- Many other lamp / ballast & wiring configurations are available – consult factory for all other available options
- All fixtures include Ballast (Luminaire) Disconnects as per UL 1598 standards

FINISH:

- Pre-painted gloss white polyester powder coat baked white enamel finish is standard
- Post-painted gloss white polyester powder coat baked white enamel finish is optional
- Custom colors are optional

LENS / DIFFUSER:

- Lens profile designed to fit uniformly against housing / end cap without sagging
- High quality, 100% virgin clear acrylic with a "DR" additive for improved resistance to breakage. 30% DR is standard, 50% DR is optional
- Pattern 12 prismatic embossment on bottom of lens with extruded, linear prisms on each side of lens is standard
- Polycarbonate material, additives and special prismatic patterns are available – consult factory for all available options

LAMPHOLDERS:

- Twist-Lock style, snap-in, thermoplastic type ensure positive lamp retention
- High temperature rated (T-Rating)

INSTALLATION:

- Fixture can be mounted several ways: Surface, Pendant, Chain or Cable

CERTIFICATIONS:

- All fixtures are UL/CUL Listed and labeled
- Suitable for damp locations



Scan for additional information on this fixture type.

VETERAN OWNED AND OPERATED

UL LISTED

ILLUMINATING ENGINEERING SOCIETY Sustaining Member

SME Society of Manufacturing Engineers

NTMA NATIONAL TOOLING AND MACHINING ASSOCIATION

NEMA Member

ARRA Funding Compliant

Made in USA

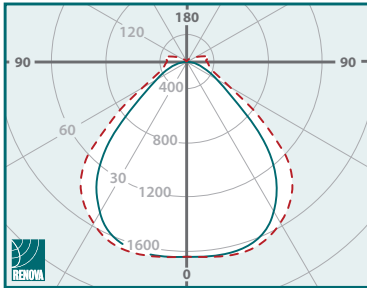


Innovative Lighting Ideas
Energy Efficient Solutions

Series:
ECS Energy Conservation Series

Fixture Type:
WPW Wide Profile Wrap

2 Lamp Photometric Data

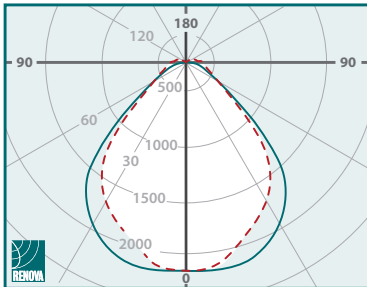


ECS-WPW4-WN-232-UNV-12L

Independent Test Report #: 16737
Total Luminaire Efficiency: 86.1%
Spacing Criterion:

- 0 deg 1.28 - - - 90 deg 1.37
- 180 deg 1.28 - - - 270 deg 1.37

2 Lamp Photometric Data



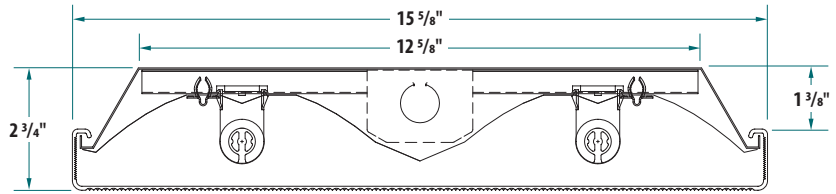
ECS-WPW4-MN-232-UNV-12L

Independent Test Report #: 16736
Total Luminaire Efficiency: 89.7%
Spacing Criterion:

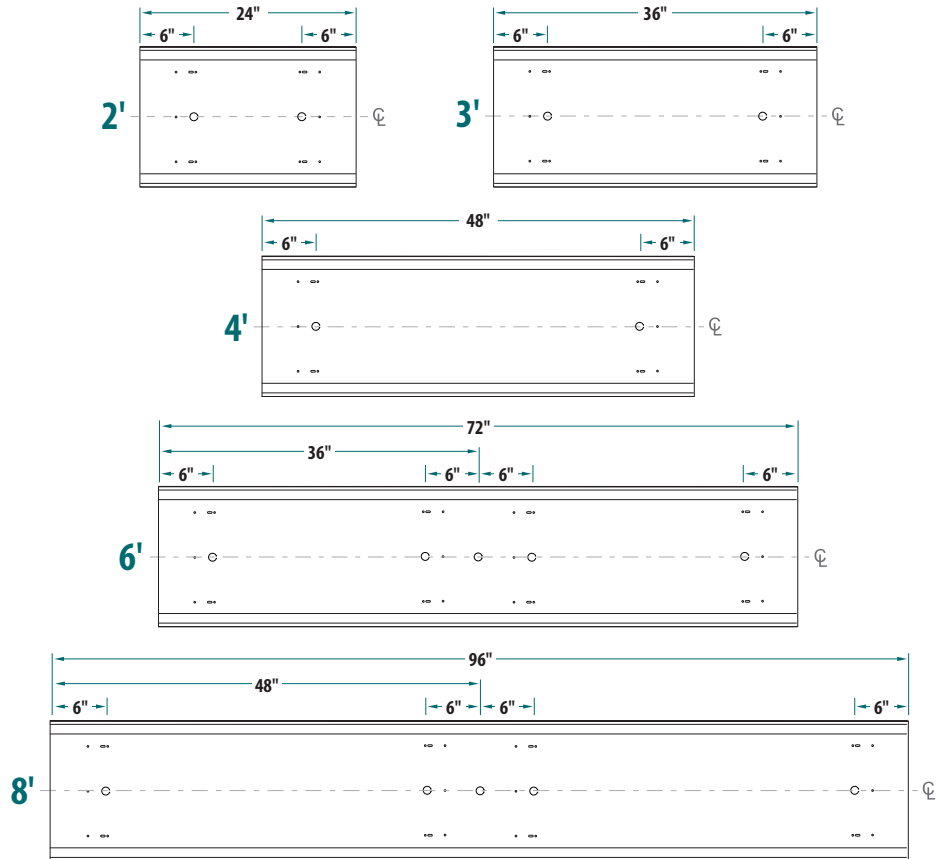
- 0 deg 1.26 - - - 90 deg 1.07
- 180 deg 1.26 - - - 270 deg 1.07

*Please see website for all other photometric data.

2-Lamp Wide Profile Wrap Cross Section



Fixture Housing Dimensions



Note: Unless otherwise specified, all EKO's are 7/8" diameter.

Ordering Information

Series	Fixture Type	Size	Reflector Material	Optics (Distribution)	# of Lamps	Lamp Type (Wattage)	Ballast Voltage	# of Ballasts	# Lamps per Ballast	Ballast Factor	Ballast Type	Options
ECS	WPW											
Energy Conservation Series	Wide Profile Wrap	2 - 24" 3 - 36" 4 - 48" 6 - 72" 8 - 96"	M - Miro4 (95% TR) W - White (91% TR) C - Custom (Specify)	F - Focused N - Normal S - Spread C - Custom *N - Normal is standard *C - Custom optics are described in "Options" box	2 - 2 Lamp 4 - 4 Lamp 2; 3; or 4' Hsg 8 - 4 Lamp 6' and 8' Hsg	17 - (2') 17w T8 25 - (3') 25w T8 32 - (4') 32w T8 14 - (2') 14w T5 21 - (3') 21w T5 28 - (4') 28w T5 24 - (2') 24w TSHO 39 - (3') 39w TSHO 54 - (4') 54w TSHO	120 - 120v, 60 Hz 277 - 277v, 60 Hz UNV - 120v-277v, 60 Hz (Multi-Tap) 347 - 347v, 60 Hz 480 - 480v, 60 Hz xxx - Less Ballast *UNV - Universal voltage is standard	5 - Slave (Less Ballast) 1 - 1 2 - 2 3 - 3 4 - 4	0 - 0 1 - 1 2 - 2 3 - 3 4 - 4	L - Low N - Normal H - High *If "S" was used in "# of Ballasts" box, mark as "0" *Use suffix "M" for Master (Example: 4M)	IST - Instant Start RST - Rapid Start LVD - Low Voltage Dimming DIM - Line Voltage Dimming SDM - Step-Dimming ADDITIONAL OPTIONS <i>(Please see separate "Options Sheet" for all available options)</i>	



Fluorescent lamps contain small amounts of mercury. Such lamps are labeled "Contains Mercury" and / or with the symbol "Hg." Lamps that contain mercury must be disposed of in accordance with local requirements. Information regarding lamp recycling and disposal can be found at www.lamprecycle.org.