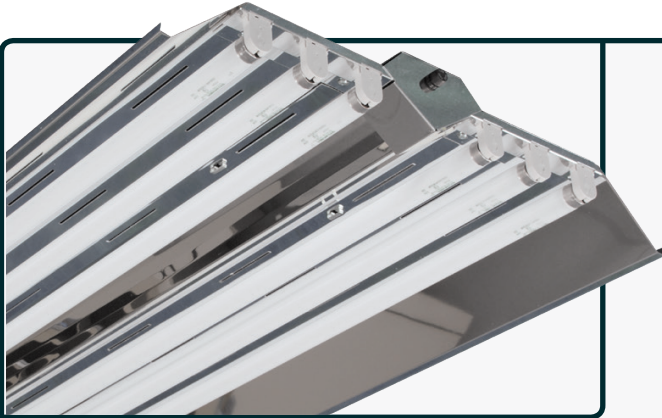




Series:
ECS Energy Conservation Series

Fixture Type :
WUI Wide UltraLyte Industrial

| Project Name | Fixture Type | Catalog # | Quantity |
|----------------------|----------------------|----------------------|----------------------|
| <input type="text"/> | <input type="text"/> | <input type="text"/> | <input type="text"/> |



The Wide UltraLyte Industrial (WUI) Series has been developed to provide maximum energy-efficient, cost effective general lighting in a clean, streamlined design that is both appealing and functional. The fixture's unique channel design offers rigidity and stability in a reduced weight configuration. The WUI series offers versatility and flexibility in design and is cost effective in a wide range of applications.

Typical applications for this type of product are interior spaces where appearance and performance are important. Applications include:

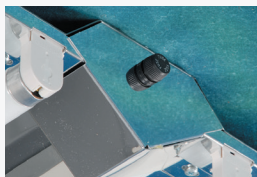
- Industrial Facilities
- Commercial / Retail Spaces
- Warehouse Facilities – Isles and Open Areas
- Government Facilities
- Storage Facilities
- Schools and Universities



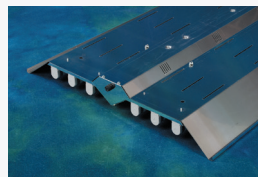
Twist-Lock style Lampholders (Standard)



Multi-Faceted Reflector (Designed for Maximum Efficiency and Optimal Distribution)



Optional Panel-Mount Fuse Shown



Mounting Details (Included in all Housings)

Note: RENOVA products are constantly being improved; therefore, the information shown is subject to change without notice. Always consult your lighting representative or RENOVA Lighting Systems, Inc. for the latest information.

Design Features / Specifications

CONSTRUCTION:

- Housing is manufactured from code gauge, die-formed aluminum alloy
- Mechanically fastened for strength and rigidity
- Code gauge end caps and internal components
- 7/8" EKO's provided in end caps for row mounting

REFLECTOR / OPTICS:

- Reflectors are precision-formed, per UL aluminum construction standards, multi-faceted for maximum photometric performance
- Choice of reflector materials include High Reflectance White finish and Alanod Miro4 specular finish. Other options available – consult factory
- Reflectors / Ballast Covers are easily removed without the use of tools

ELECTRICAL:

- All standard ballasts are instant start or program rapid start, UL listed, CEE rated high efficiency electronic, Class "P", Sound Rated "A", RoHS compliant and are the universal voltage (120v–277v) type. All ballasts are mechanically fastened into fixture housing. Other voltages are available – consult factory
- Many other lamp / ballast & wiring configurations are available – consult factory for all other available options
- All fixtures include Ballast (Luminaire) Disconnects as per UL 1598 standards

FINISH:

- Anodized, specular aluminum is standard when ordering Miro4 Reflector option
- Pre-painted gloss white polyester powder coat baked white enamel finish is standard when ordering High Reflectance White Reflector option

LAMP HOLDERS:

- Twist-Lock style, snap-in, thermoplastic type ensure positive lamp retention
- High temperature rated (T-Rating)

INSTALLATION:

- Fixture can be mounted several ways: Surface, Pendant, Chain or Cable

CERTIFICATIONS:

- All fixtures are UL/CUL Listed and labeled
- Suitable for damp locations



Scan for additional information on this fixture type.



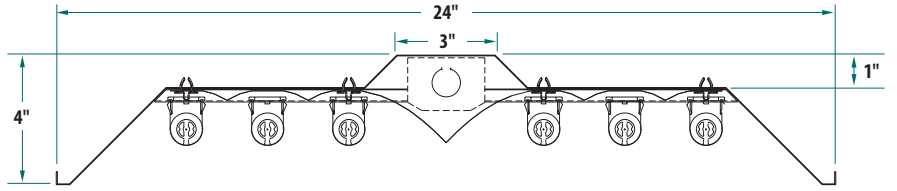


Innovative Lighting Ideas
Energy Efficient Solutions

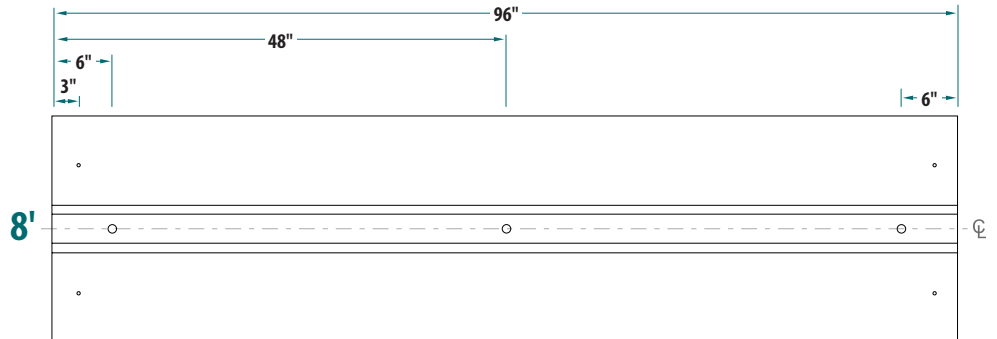
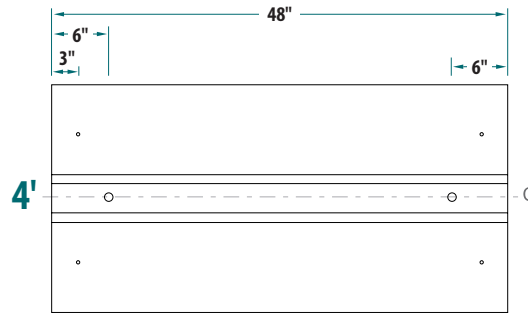
Series:
ECS Energy Conservation Series

Fixture Type:
WUI Wide UltraLyte Industrial

6-Lamp T8 Wide UltraLyte Industrial Cross Section

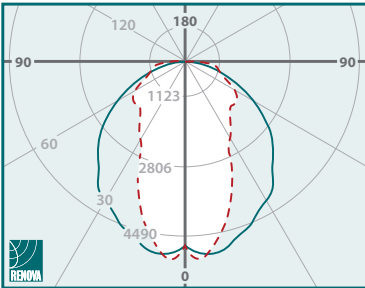


Fixture Housing Dimensions



Note: Unless otherwise specified, all EKO's are 7/8" diameter.

4 Lamp Photometric Data

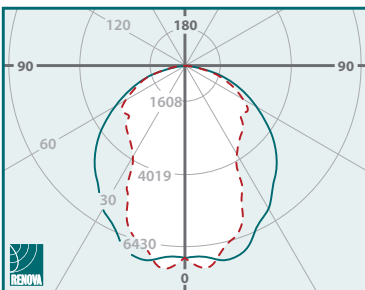


ECS-WUI4-MN-432-UNV-14N

Internal Test Report #: 06917
Total Luminaire Efficiency: 90.9%
Spacing Criterion:

- 0 deg 1.36 - - 90 deg 0.92
- 180 deg 1.36 - - 270 deg 0.92

6 Lamp Photometric Data



ECS-WUI4-MN-632-UNV-23N

Internal Test Report #: 06923
Total Luminaire Efficiency: 89.7%
Spacing Criterion:

- 0 deg 1.24 - - 90 deg 0.89
- 180 deg 1.24 - - 270 deg 0.89

*Please see website for all other photometric data.

Ordering Information

| Series | Fixture Type | Size | Reflector Material | Optics (Distribution) | # of Lamps | Lamp Type (Wattage) | Ballast Voltage | # of Ballasts | # Lamps per Ballast | Ballast Factor | Options |
|----------------------------|---------------------------|--------------------|--|---|---|--|--|--|----------------------------------|-----------------------------------|--|
| ECS | WUI | | | | | | | | | | |
| Energy Conservation Series | Wide UltraLyte Industrial | 4 - 48" 8 - 96" | M - Miro4 (95% TR) W - White (91% TR) | F - Focused N - Normal S - Spread C - Custom *N - Normal is standard *C - Custom optics are described in "Options" box | 4 - 4 Lamp 6 - 6 Lamp 4 Hsg 8 - 8 Lamp 12 - 12 Lamp 8' Hsg | 32 - (4') 32w T8 54 - (4') 54w T5HO | 120 - 120v, 60 Hz 277 - 277v, 60 Hz UNV - 120v-277v, 60 Hz (Multi-Tap) 347 - 347v, 60 Hz 480 - 480v, 60 Hz xxx - Less Ballast *UNV - Universal voltage is standard | 1 - 1 2 - 2 3 - 3 4 - 4 5 - 5 6 - 6 | 1 - 1 2 - 2 3 - 3 4 - 4 | L - Low N - Normal H - High | IST - Instant Start RST - Rapid Start LVD - Low Voltage Dimming DIM - Line Voltage Dimming SDM - Step-Dimming ADDITIONAL OPTIONS <i>(Please see separate "Options Sheet" for all available options)</i> |

Hg
Fluorescent lamps contain small amounts of mercury. Such lamps are labeled "Contains Mercury" and / or with the symbol "Hg." Lamps that contain mercury must be disposed of in accordance with local requirements. Information regarding lamp recycling and disposal can be found at www.lamprecycle.org.