



Series:
LNR - Lineaire

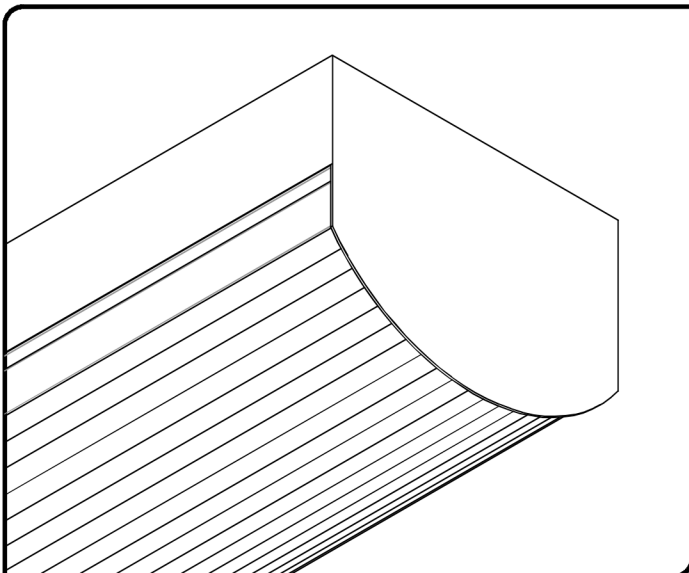
Fixture Type:
Surface Mount / Suspended

Project Name

Fixture Type

Catalog Number

Quantity



The Lineaire Series LED fixture family has been developed to dramatically improve energy efficiency and quality of light using Solid State Lighting (SSL) technologies. The Lineaire Series LED fixtures provide an attractive, energy efficient, architectural look which has been specifically designed to replace existing fluorescent lighting or for use in new construction. Comfortable low glare, uniform lighting is attributed to this style of fixture. Typical applications for this type of product are interior spaces. for this type of product are interior spaces.

Applications Include:

- | | |
|--------------------------------------|-------------------------------------|
| • Retail Environments | • Hospitals / Healthcare Facilities |
| • Commercial Spaces | • Government Facilities |
| • Industrial Spaces | • Manufacturing Spaces |
| • Schools, Colleges and Universities | |



*Note: RENOVA products are constantly being improved; therefore, the information shown is subject to change without notice. Always consult your lighting representative or RENOVA Lighting Systems, Inc. for the latest information

Design Features / Specifications

CONSTRUCTION:

- Housing to be manufactured from code-gauge, die-formed cold rolled steel.
- All components are mechanically / resistance welded fastened for strength and rigidity.
- Electrical Knock-Outs (EKO's) are provided in end caps and housing.

REFLECTOR:

- Reflectors are precision die-formed from code-gauge cold rolled steel. Finish is high-reflectance white powder coat baked enamel. (94% T.R. Min.)
- Driver Cover is secured into housing with thumb nut style fasteners for ease of maintenance.

FINISH:

- All housings and componts manufactured from cold rolled steel receive a multi-stage iron phosphate pre-treatment prior to finishing.
- Gloss White polyester powder coat baked enamel for extreme durability and architectural aesthetics. Pre-Paint is Standard. Post-Paint is optional.
- Custom colors and finishes are available as an option (including color-matching).

LED's / OPTICS:

- High performance LED boards manufactured specifically for interior lighting. LED boards feature the latest mid-power LED's for maximum performance, efficiency and longevity.
- Standard color temperatures offered are 3500K and 4000K. Other optional color temperatures available are 3000K and 5000K. 80 CRI (Min.). RoHS Compliant.
- Always consult RENOVA for the latest developments and improvements concerning LED's and Optics.

DRIVERS:

- Electronic, constant current type. Universal voltage (120v-277v) is standard.
- 0-10v Low Voltage, dimmable. 10%-100% (Standard). 0%-100% (Optional).
- Step-Dim and Line Voltage Drivers (Specify Voltage) are optional.
- Suitable for dry and damp locations. UL Recognized Class 2, RoHS Compliant.

LENS / DIFFUSER:

- Custom extruded from special blend of 100% virgin acrylic & high light transmission / LED diffusing polymer. 30% DR additive used to increase resistance to breakage.
- Extruded linear ribs provide clean, aesthetic architectural look.
- Lens thickness to be 0.080" (Standard). Consult factory for special requirements.

MOUNTING:

- Fixtures are designed to be surface mounted, or suspended using pendant, aircraft cable, or jack chain. Consult factory for all other special mounting conditions.

ELECTRICAL:

- Surface / Suspended fixtures are UL/CUL Listed and labeled.
- LM80 performance for 50,000+ hours.
- Bi-Level dimming option allows 50% power reduction for compliance with common energy codes.
- Driver disconnect provided where required to comply with US and Canadian codes.

QUALITY CONTROL:

- All fixtures are designed, fabricated, painted, assembled, tested, packaged and shipped from RENOVA's manufacturing facility in Mansfield, MA (USA).

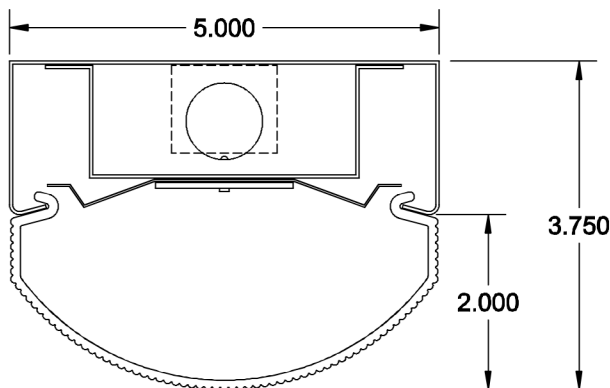
WARRANTY:

- 5-Year limited warranty. Please refer to RENOVA's website at www.renova.com/sales/warranties for the latest warranty terms and conditions.

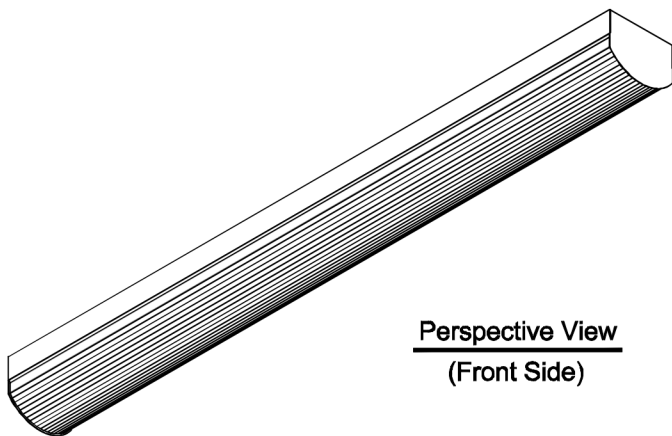


Series:
LNR - Lineaire

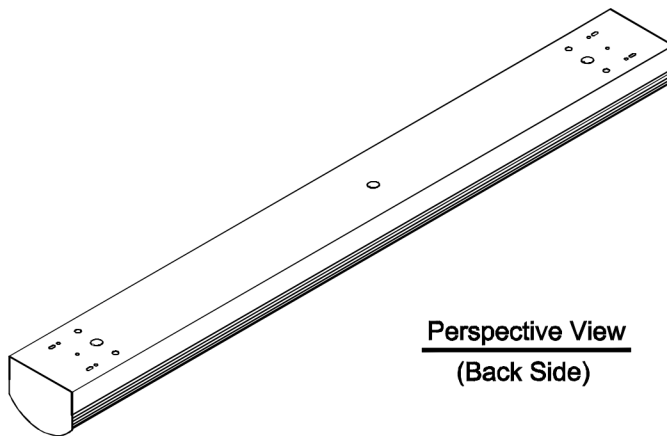
Fixture Type:
Surface Mount / Suspended



Cross Section



Perspective View
(Front Side)



Perspective View
(Back Side)

Ordering Information

Prefix / Series	Size	Optics (Distribution)	Lumen Output	Driver Voltage	Driver Type	Color Temp.	Lens (Diffuser)	Housing Color / Finish	Fixture Construction	Row Configuration	Options
LNR											
LNR - Lineaire Series	2 - 24" 3 - 36" 4 - 48" 6 - 72" 8 - 96"	N - Normal C - Custom (Specify)	L015 - 1500 L020 - 2000 L030 - 3000 L040 - 4000 L050 - 5000 L060 - 6000 L070 - 7000 L080 - 8000 L090 - 9000 L100 - 10000 L110 - 11000 L120 - 12000 L130 - 13000 L140 - 14000 L150 - 15000 L160 - 16000 LC - Custom (Specify)	UNV - Universal Voltage (120V - 277V) 120 - 120v 277 - 277v 347 - 347v (Special)	DM - 0-10v Low Voltage Dimming (10%-100%) (Standard) SD - Step Dimming (50% / 100%) LV - Line Voltage Dimming (Specify Voltage) 120v or 277v	C30 - 3000K C35 - 3500K * C40 - 4000K * C50 - 5000K (*) - Standard	FA - Frosted Acrylic, Linear Prism (Standard) CS - Custom (Specify)	PP - Pre-Painted Gloss White (Standard) GW - Post-Painted Gloss White TW - Textured White CS - Custom Finish (Specify)	(BLANK) - Standard SCA - NYC / SCA Specs	IND - Individual END - End MID - Middle	QP1 - Quick Plug Wire Harness 12 Ga. 20amp Single circuit VC - "V"-Cables OCR - Occupancy Sensor (Specify) XXX - Specify Sensor (Specify)

*LED Dimming Drivers have adjustable (programmable) output capability. A wide range of input watts / lumen output can be adjusted up or down on all models to suit a particular application. Always consult factory for the latest information.

*Photometric data, IES files and all other information is available upon request.

PRIOR TO REPLACING AN EXISTING FLUORESCENT LIGHTING FIXTURE, PLEASE NOTE THE FOLLOWING:

Fluorescent lamps contain small amounts of mercury. Such lamps are labeled "Contains Mercury" and / or with the symbol "Hg". Lamps that contain mercury must be disposed of in accordance with local requirements. Information regarding lamp recycling and disposal can be found at www.lamprecycle.org.





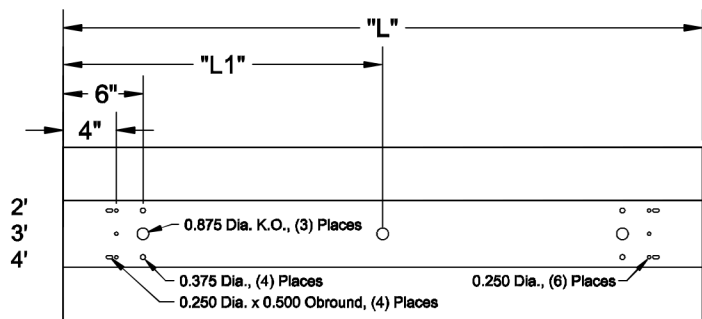
Series:

LNR - Lineaire

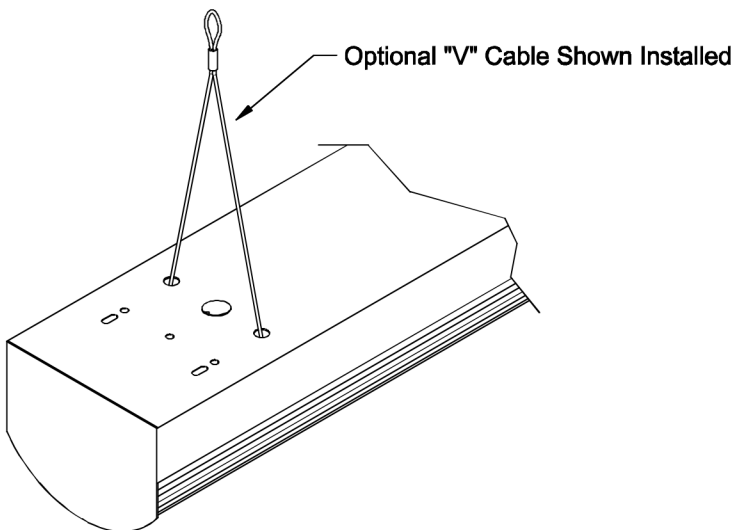
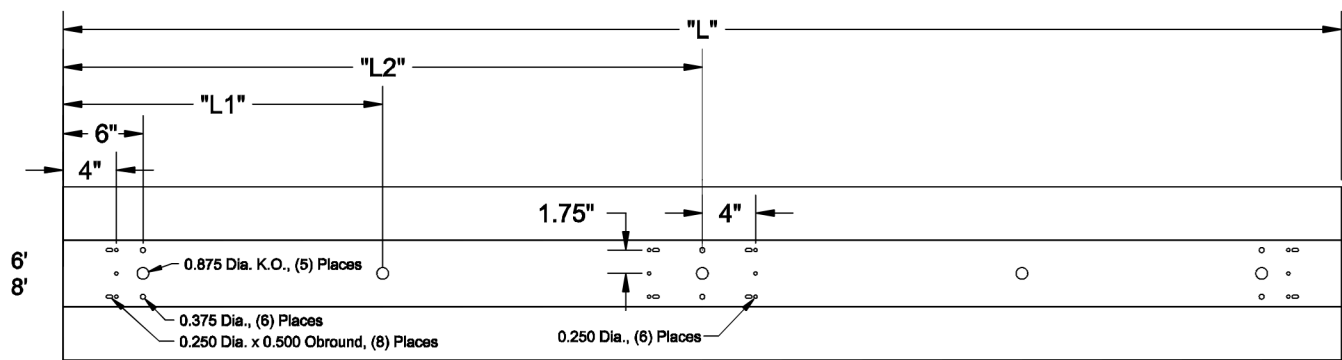
Fixture Type:

Surface Mount / Suspended

Mounting Details



Size	"L" Dim.	"L1" Dim.	"L2" Dim.
2'-0"	24.000"	12.000"	N/A
3'-0"	36.000"	18.000"	N/A
4'-0"	48.000"	24.000"	N/A
6'-0"	72.000"	18.000"	36.000"
8'-0"	96.000"	24.000"	48.000"



*Photometric data, IES files and all other information is available upon request.