

Series:  
**SFT - Soft Light Series**

Fixture Type:  
**Surface Mount / Suspended**

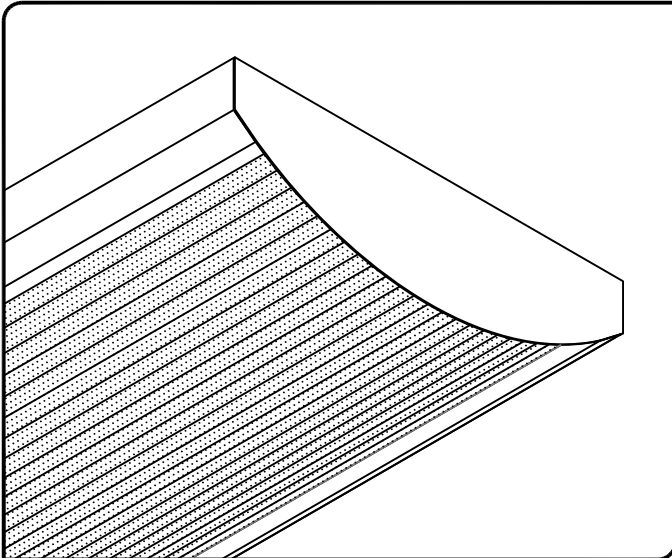
Project Name

Fixture Type

Catalog Number

Quantity



The Soft Light Series LED fixture family has been developed to dramatically improve energy efficiency and quality of light using Solid State Lighting (SSL) technologies. The Soft Light Series LED fixtures provide an attractive, low profile, energy efficient architectural look which has been specifically designed to replace existing fluorescent lighting or for use in new construction. Comfortable, low glare, uniform lighting is attributed to this style of fixture. Typical applications for this type of product are interior spaces where finished ceilings and walls exist.

#### Applications Include:

- Office Buildings
- Commercial Spaces
- Retail Environments
- Schools and Universities
- Hospitals / Healthcare Facilities
- Government Facilities
- Military Bases



\*Note: RENOVA products are constantly being improved; therefore, the information shown is subject to change without notice. Always consult your lighting representative or RENOVA Lighting Systems, Inc. for the latest information

#### Design Features / Specifications

##### CONSTRUCTION:

- Housing to be manufactured from code-gauge, die-formed cold rolled steel.
- All components are mechanically / resistance welded fastened for strength and rigidity.
- Electrical Knock-Outs (EKO's) are provided in end caps and housing.

##### REFLECTOR:

- Reflectors are precision formed from code-gauge cold rolled steel. Finish is high-reflectance matte white powder coat baked enamel. (97% T.R.)
- Reflectors are tethered to housing for ease of driver accessibility and maintenance.
- Reflectors are secured into housing with captive, quarter-turn wing nuts for ease of maintenance.

##### FINISH:

- All housings and components manufactured from cold rolled steel receive a multi-stage iron phosphate pre-treatment prior to finishing.
- Gloss White polyester powder coat baked enamel for extreme durability and architectural aesthetics (Standard).
- Custom colors and finishes are available as an option (including color-matching).

##### LED's / OPTICS:

- High performance LED boards manufactured specifically for interior lighting. LED boards feature the latest mid-power LED's for maximum performance, efficiency and longevity.
- Standard color temperatures offered are 3500K and 4000K. Other optional color temperatures available are 3000K and 5000K. 80 CRI (Min.). RoHS Compliant.
- Always consult RENOVA for the latest developments and improvements concerning LED's and Optics.

##### DRIVERS:

- Electronic, constant current type. Universal voltage (120v-277v) is standard.
- 0-10v Low Voltage, dimmable. 10%-100% (Standard). 0%-100% (Optional).
- Step-Dim and Line Voltage Drivers (Specify Voltage) are optional.
- Suitable for dry and damp locations. UL Recognized Class 2, RoHS Compliant.

##### LENS / DIFFUSER:

- Custom extruded from special blend of 100% virgin acrylic & high light transmission / LED diffusing polymer. 30% DR additive used to increase resistance to breakage.
- Extruded linear ribs provide clean, aesthetic architectural look.
- Lens thickness to be 0.080" (Standard). Consult factory for special requirements.

##### MOUNTING:

- Fixtures are designed to be surface mounted, or suspended using pendant, aircraft cable, or jack chain. Consult factory for all other special mounting conditions.

##### ELECTRICAL:

- Surface / Suspended fixtures are UL/CUL Listed and labeled.
- LM80 performance for 50,000+ hours.
- Bi-Level dimming option allows 50% power reduction for compliance with common energy codes.
- Driver disconnect provided where required to comply with US and Canadian codes.

##### QUALITY CONTROL:

- All fixtures are designed, fabricated, painted, assembled, tested, packaged and shipped from RENOVA's manufacturing facility in Mansfield, MA (USA).

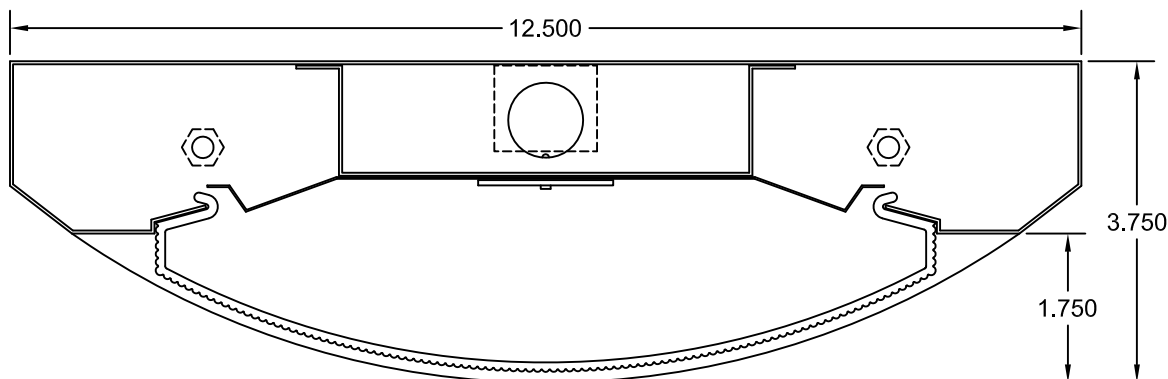
##### WARRANTY:

- 5-Year limited warranty. Please refer to RENOVA's website at [www.renova.com/sales/warranties](http://www.renova.com/sales/warranties) for the latest warranty terms and conditions.

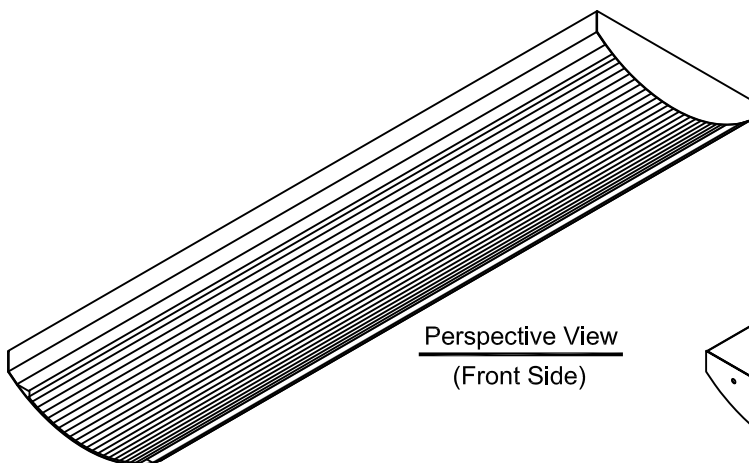


Series:  
SFT - Soft Light Series

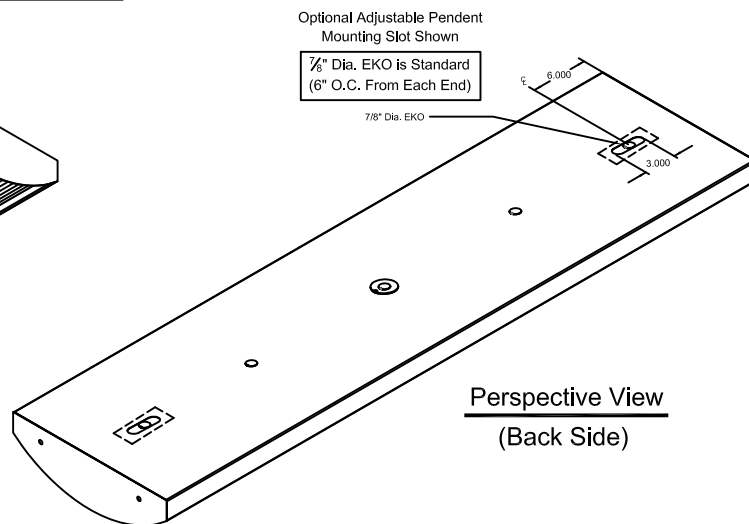
Fixture Type:  
Surface Mount / Suspended



Cross Section



Perspective View  
(Front Side)



Perspective View  
(Back Side)

### Ordering Information

Prefix / Series	Size	Optics (Distribution)	Lumen Output	Driver Voltage	Driver Type	Color Temp.	Lens (Diffuser)	Housing Color / Finish	Fixture Construction	Options
SFT	2 - 24" 3 - 36" 4 - 48" 6 - 72" 8 - 96"	N - Normal C - Custom (Specify)	L20 - 2000 L30 - 3000 L40 - 4000 L50 - 5000 L60 - 6000 L70 - 7000 L80 - 8000 L90 - 9000 L100 - 10000 L110 - 11000 L120 - 12000	UNV - Universal Voltage (120v - 277v)  120 - 120v 277 - 277v	DM - 0-10v Low Voltage Dimming (10%-100%) (Standard)  SD - Step Dimming (50% / 100%)  LV - Line Voltage Dimming (Specify Voltage) 120v or 277v	C30 - 3000K C35 - 3500K C40 - 4000K C50 - 5000K	AF - Frosted Acrylic, Linear Prism (Standard)  CS - Custom (Specify)	GW - Gloss White (Standard)  TW - Textured White CS - Custom Finish (Specify)	(BLANK) - Standard SCA - NYC / SCA Specifications	L110 - 0,110 Thick Lens (Diffuser) QP1 - Quick Plug Wire Harness 12 Ga. 20amp Single circuit RM - Row Mount Hardware & End Cap Alignment Holes Provided (1/4" K.O. Type) AP - Adjustable Pendant Detail (Sliding Plate) (18 Ga. Steel)

\*LED Dimming Drivers have adjustable (programmable) output capability. A wide range of Input watts / lumen output can be adjusted up or down on all models to suit a particular application. Always consult factory for the latest information.

\*Photometric data, IES files and all other information is available upon request.

PRIOR TO REPLACING AN EXISTING FLUORESCENT LIGHTING FIXTURE, PLEASE NOTE THE FOLLOWING:

Fluorescent lamps contain small amounts of mercury. Such lamps are labeled "Contains Mercury" and / or with the symbol "Hg". Lamps that contain mercury must be disposed of in accordance with local requirements. Information regarding lamp recycling and disposal can be found at [www.lamprecycle.org](http://www.lamprecycle.org).





Series:  
SFT - Soft Light Series

Fixture Type:  
Surface Mount / Suspended

### Lighting Fixture Schedule and System Information

Fixture Type	Size	*Input Watts	Lumens (Min.)	Color Temp.	Voltage	LED Driver	Mounting
A1	8'-0"	*65	6250	3500K	120v - 277v	(1) - Integral	Pendant
A2	4'-0"	*32	3150	3500K	120v - 277v	(1) - Integral	Pendant
A5	3'-0"	*27	2350	3500K	120v - 277v	(1) - Integral	Pendant
A6	4'-0"	*90	9150	3500K	120v - 277v	(1) - Integral	Pendant
B1	8'-0"	*65	6250	3500K	120v - 277v	(1) - Integral	Surface
B2	4'-0"	*32	3150	3500K	120v - 277v	(1) - Integral	Surface
B5	3'-0"	*27	2350	3500K	120v - 277v	(1) - Integral	Surface
C	4'-0"	*50	4800	3500K	120v - 277v	(1) - Integral	Surface
C1	8'-0"	*90	9000	3500K	120v - 277v	(1) - Integral	Surface
E	4'-0"	*50	4800	3500K	120v - 277v	(1) - Integral	Surface
E2	8'-0"	*90	9000	3500K	120v - 277v	(1) - Integral	Surface

**\*Note:**

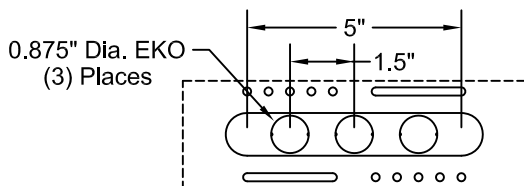
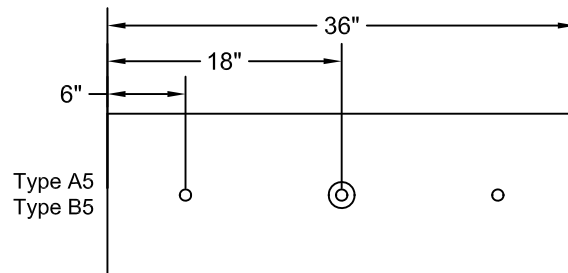
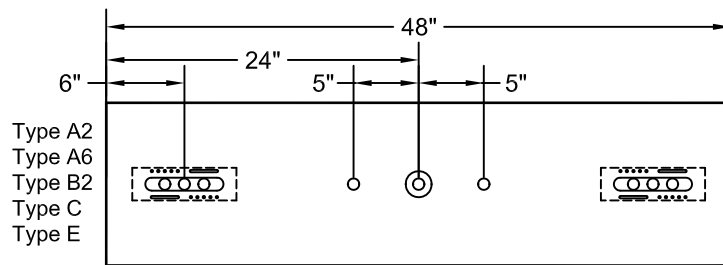
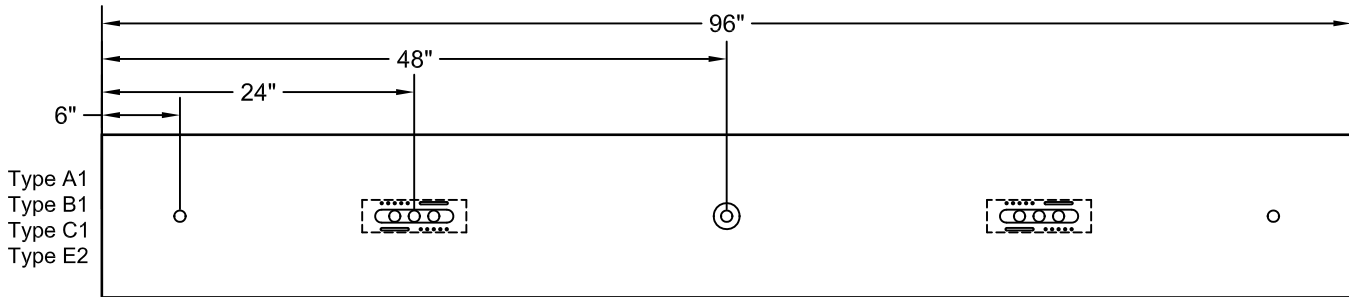
Input Watts listed are approximate values only and are listed only as a general guideline.



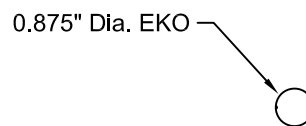
Series:  
SFT - Soft Light Series

Fixture Type:  
Surface Mount / Suspended

## Mounting Details



Adjustable Plate Detail



Electrical Knock-Out (EKO) Detail

